

**BEAR VALLEY FRANKLIN COUNTY JOINT AUTHORITY  
STANDARD DETAILS**

**TABLE OF CONTENTS**

---

AIR RELEASE VALVE ON MAIN.....	SD - 1
AIR RELEASE VALVE OFF MAIN.....	SD - 2
BLOWOFF ASSEMBLY AT GRADE DISCHARGE .....	SD - 3
2" BLOWOFF ASSEMBLY ABOVE GRADE DISCHARGE.....	SD - 4
BLOWOFF ASSEMBLY ABOVE GRADE DISCHARGE .....	SD - 5
BLOWOFF ASSEMBLY ABOVE GRADE DISCHARGE INTO STORM DRAIN.....	SD - 6
BLOWOFF HYDRANT .....	SD - 7
END OF PIPE BLOWOFF .....	SD - 8
CASING DETAILS .....	SD - 9
CONCRETE ENCASEMENT FOR STREAM CROSSING .....	SD - 10
CONCRETE CRADLE .....	SD - 11
CONCRETE THRUST BLOCKING.....	SD - 12
DEADMAN .....	SD - 13
REINFORCED CONCRETE DEADMAN .....	SD - 14
CONCRETE SLOPE ANCHOR.....	SD - 15
EXTENDED VALVE OPERATOR .....	SD - 16
ROADWAY VALVE BOX .....	SD - 17
FIRE HYDRANT INSTALLATION.....	SD - 18
WATER METER PIT .....	SD - 19
2" WATER SERVICE METER VAULT .....	SD - 20
WATER SERVICE CONNECTION .....	SD - 21
WATER SERVICE RE-CONNECTION (INSIDE METER PIT).....	SD - 22
WATER SERVICE RE-CONNECTION (OUTSIDE METER PIT) .....	SD - 23
PIPE BEDDING AND TRENCH BACKFILLING .....	SD - 24
4", 6" AND 8" METER AND METER WITH FIRE SERVICE VAULTS.....	SD - 25

**NOTE:**

ALL FERROUS METAL COMPONENTS OF VALVE VAULT TO BE COATED WITH BITUMASTIC COATING SYSTEM.

ENTIRE INTERIOR SURFACE OF CONCRETE MANHOLE STRUCTURE, MANHOLE LID AND WATERLINE TO BE INSULATED WITH APPLIED-IN-PLACE POLYURETHANE.

AUTOMATIC AIR RELEASE/  
VACUUM VALVE

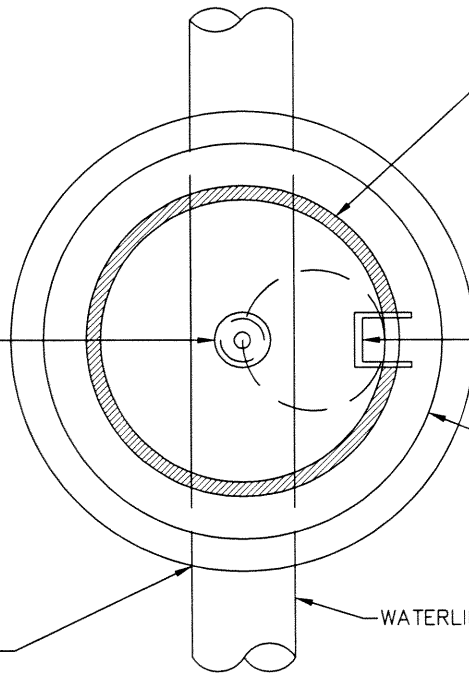
PLASTIC MANHOLE STEPS, TYPE PS2-PF BY M.A. INDUSTRIES, SPACED AT 12" C/C.

PRECAST CONCRETE MANHOLE ASTM C-478) (LENGTH AND DIAMETER AS REQUIRED)

PROVIDE NEAT HOLE IN MANHOLE WALL TO ACCOMMODATE WATERLINE PIPE (SIZE AS REQUIRED) ANNULAR SPACE BETWEEN PIPE AND WALL TO BE FILLED WITH SUITABLE NON-SHRINK GROUT. (TYPICAL)

WATERLINE AS REQUIRED

**PLAN**



FINISHED GRADE

30" CLEAR OPENING

MANHOLE FRAME & COVER

6" REINFORCED CONCRETE LID (FLAT TOP SECTION) DESIGNED FOR H-20 LOADING

PREMOLDED BITUMASTIC JOINT SEALANT

STRUCTURE TO BE BACKFILLED ENTIRELY WITH PENNDOT NO. 2RC AGGREGATE

PROVIDE OUTLET PIPE AND DIVERT FORWARD

PRECAST CONCRETE MANHOLE ASTM C-478) (LENGTH AND DIAMETER AS REQUIRED)

COMBINATION AIR RELEASE VALVE

PLASTIC MANHOLE STEPS, TYPE PS2-PF BY M.A. INDUSTRIES, SPACED AT 12" C/C.

FOR 16" PIPE AND LARGER:

2" FORD BALLCORP CORPORATION STOP, FORD CATALOG NO.: FB-800-7

FOR LESS THAN 16" PIPE:

3/4" FORD BALLCORP CORPORATION STOP, FORD CATALOG NO.: FB-800-3

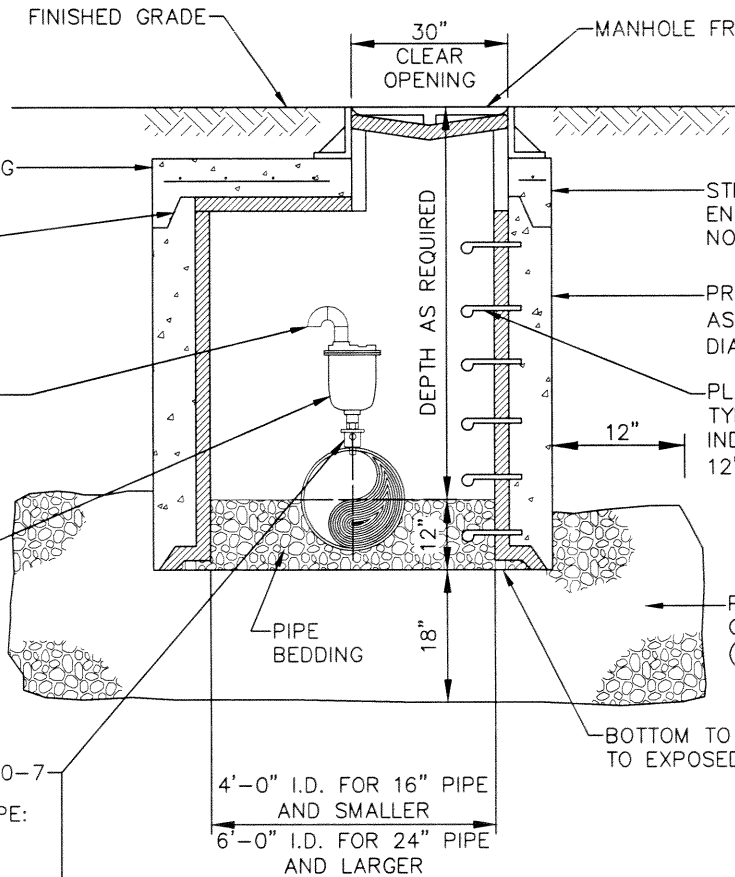
PennDOT No. 2B COARSE AGGREGATE (AAHSTO No. 57)

BOTTOM TO BE LEFT OPEN TO EXPOSED 2B STONE

DEPTH AS REQUIRED

4'-0" I.D. FOR 16" PIPE AND SMALLER  
6'-0" I.D. FOR 24" PIPE AND LARGER

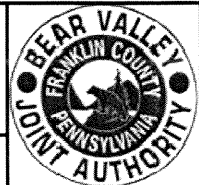
**SECTION**



BEAR VALLEY  
WATER AUTHORITY  
STANDARD DETAIL

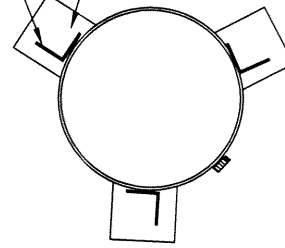
AIR RELEASE VALVE  
ON MAIN

DETAIL No. SD-1

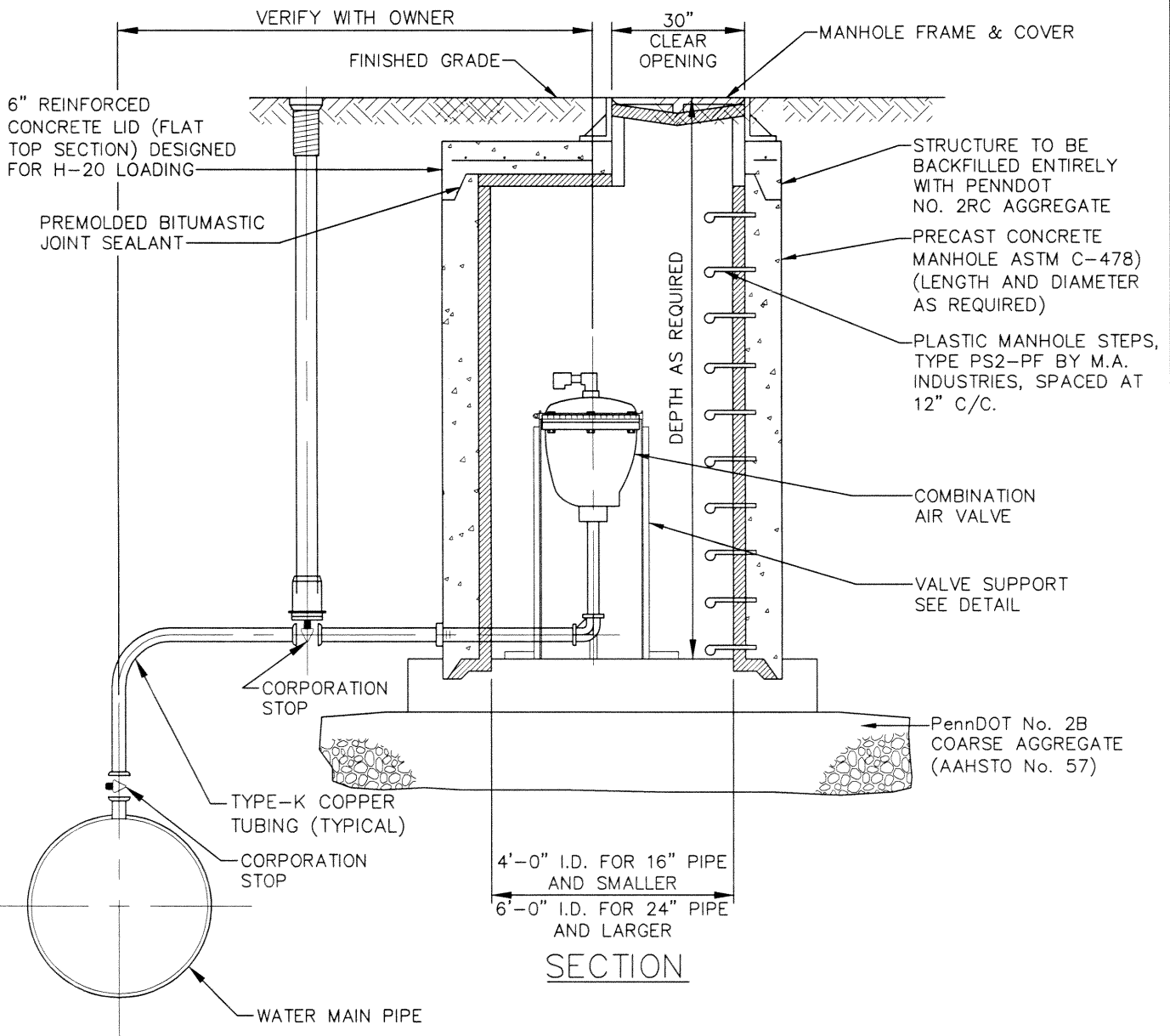


(3) MIN. 1/4"x1 1/2"x 1 1/2"  
STAINLESS STEEL ANGLE LEGS WITH  
STAINLESS STEEL STRAP AROUND  
BODY OR APPROVED EQUAL

(3) 1/4"x3"x 3"  
FOOT PLATES  
(STAINLESS STEEL)



VALVE SUPPORT DETAIL

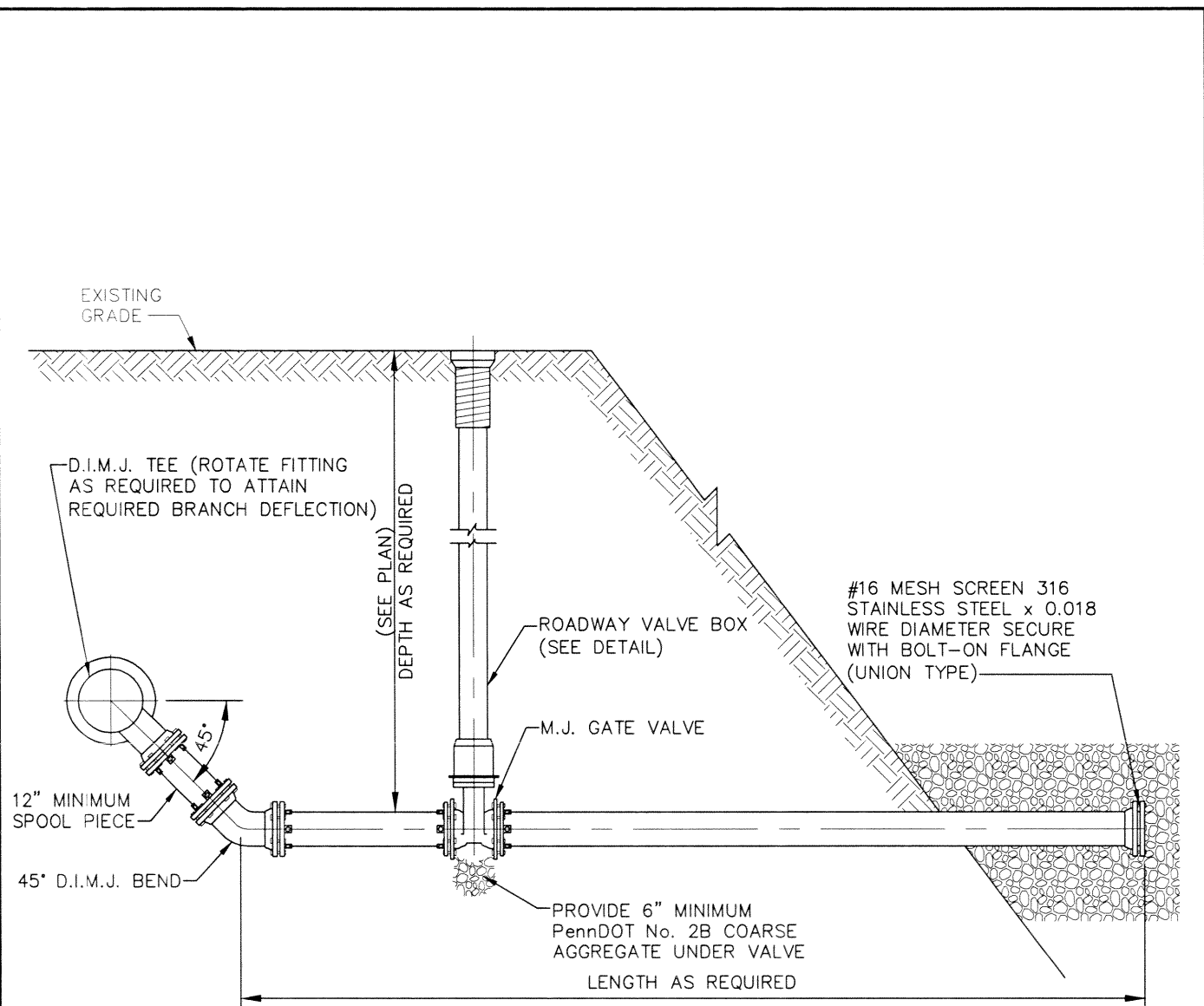


BEAR VALLEY  
WATER AUTHORITY  
STANDARD DETAIL

AIR RELEASE VALVE  
OFF MAIN

DETAIL No. SD-2





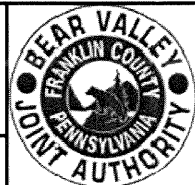
**NOTES:**

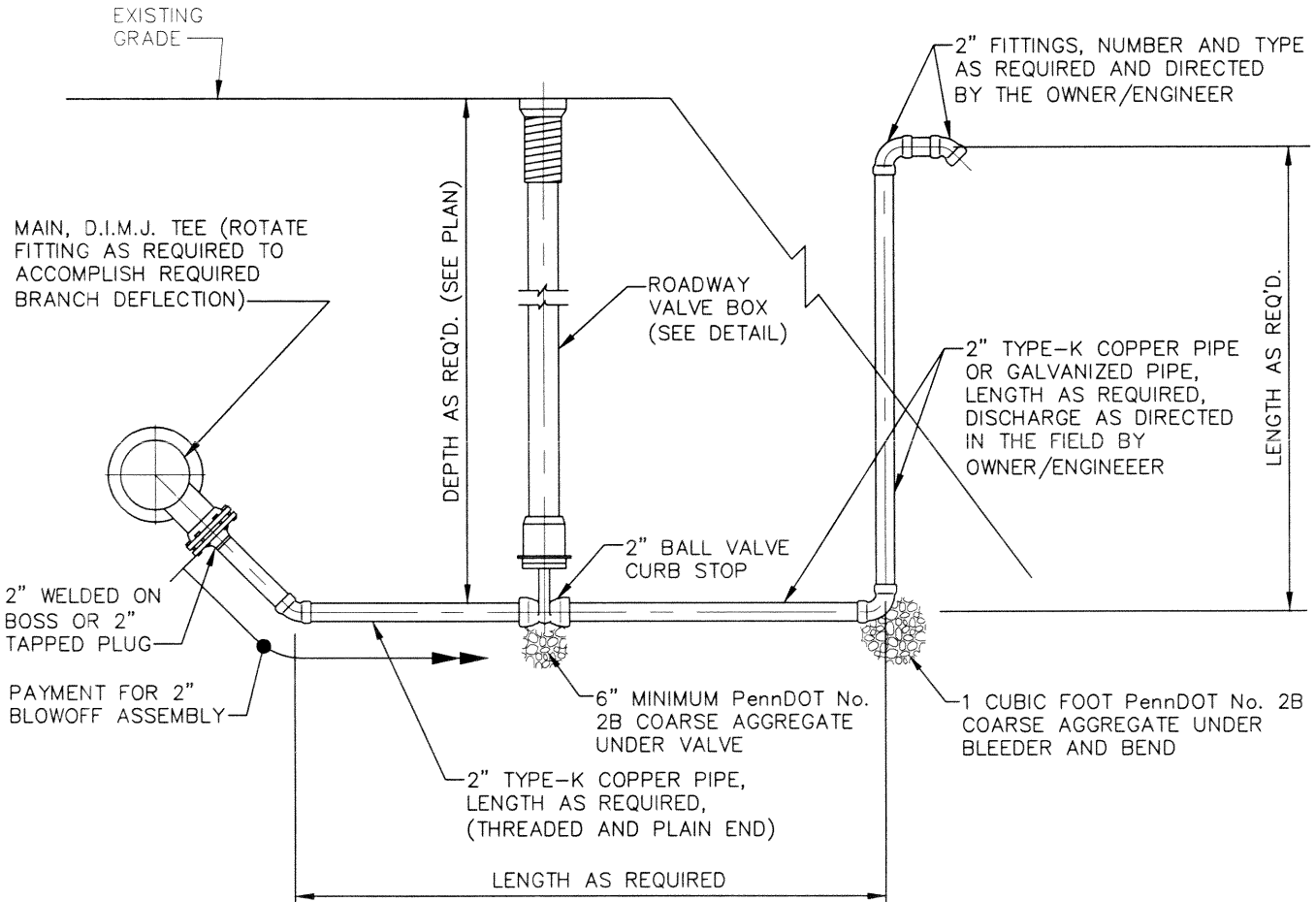
1. PROVIDE EFFECTIVELY CONTINUOUS JOINT RESTRAINT FROM MAIN LINE TEE TO DISCHARGE(USING RETAINER GLANDS AS REQUIRED).

BEAR VALLEY  
WATER AUTHORITY  
STANDARD DETAIL

BLOWOFF ASSEMBLY  
AT GRADE DISCHARGE

DETAIL No. SD-3





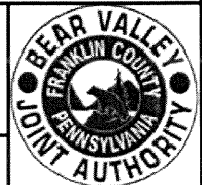
**NOTES:**

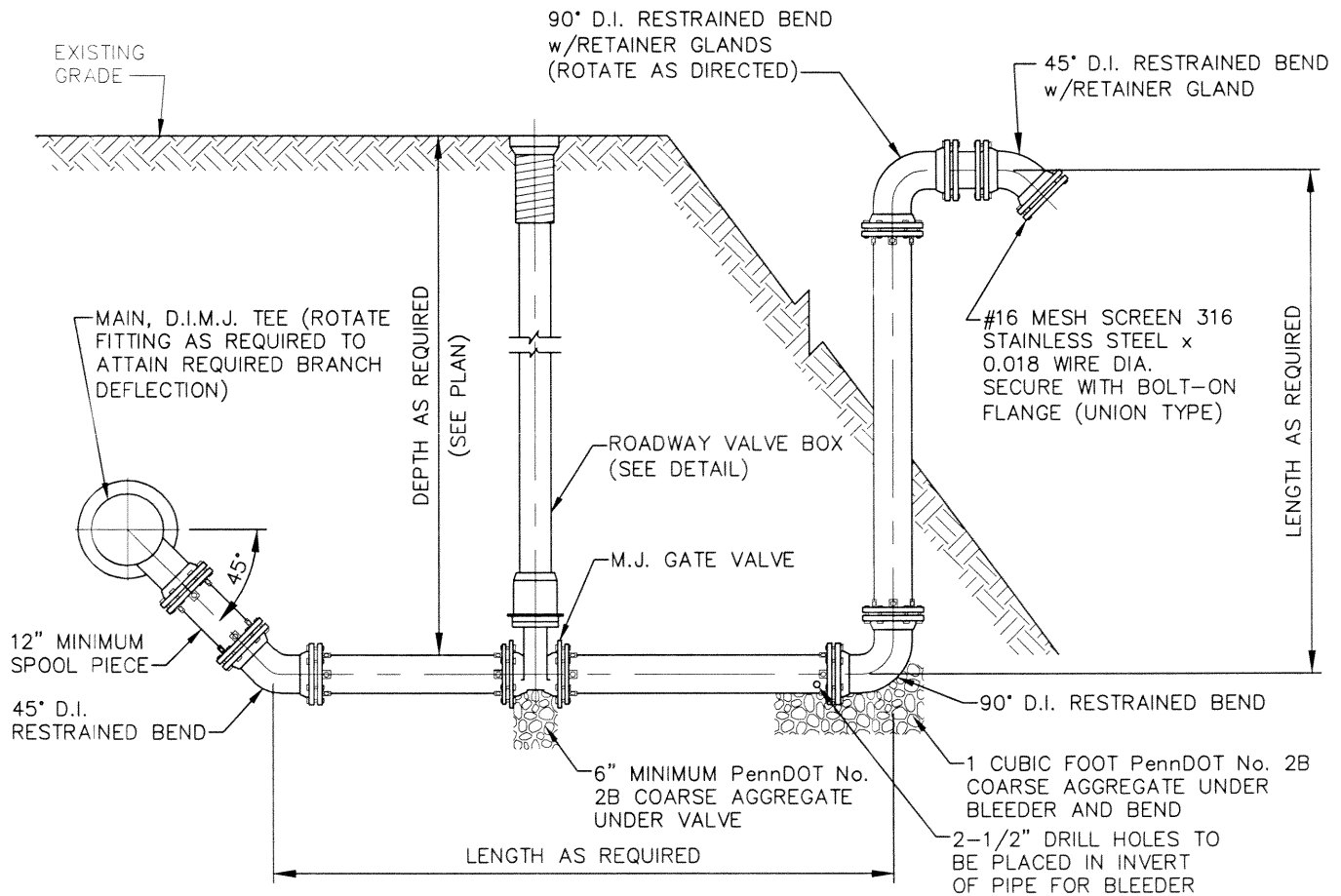
1. BLOWOFF ASSEMBLIES SHALL BE CONSTRUCTED SO THE FLOW IS NOT DIRECTED TOWARD THE VALVE BOX.

BEAR VALLEY  
WATER AUTHORITY  
STANDARD DETAIL

2" BLOWOFF ASSEMBLY  
ABOVE GRADE DISCHARGE

DETAIL No. SD-4





**NOTES:**

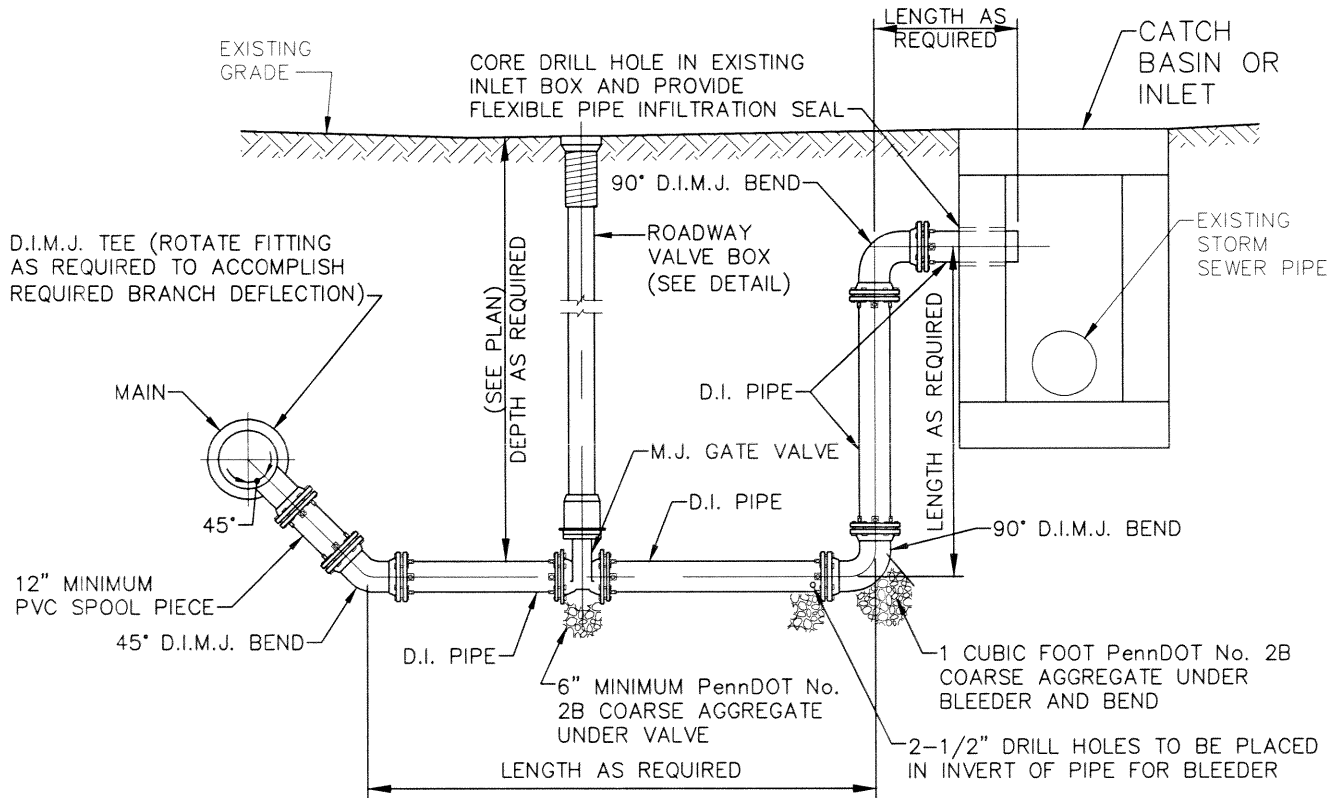
1. PROVIDE EFFECTIVELY CONTINUOUS JOINT RESTRAINT FROM MAIN LINE TEE TO DISCHARGE (USING RETAINER GLANDS AS REQUIRED).
2. BLOWOFF ASSEMBLIES SHALL BE CONSTRUCTED SO THE FLOW IS NOT DIRECTED TOWARD THE VALVE BOX.

BEAR VALLEY  
WATER AUTHORITY  
STANDARD DETAIL

BLOWOFF ASSEMBLY  
ABOVE GRADE DISCHARGE

DETAIL No. SD-5





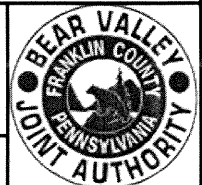
**NOTES:**

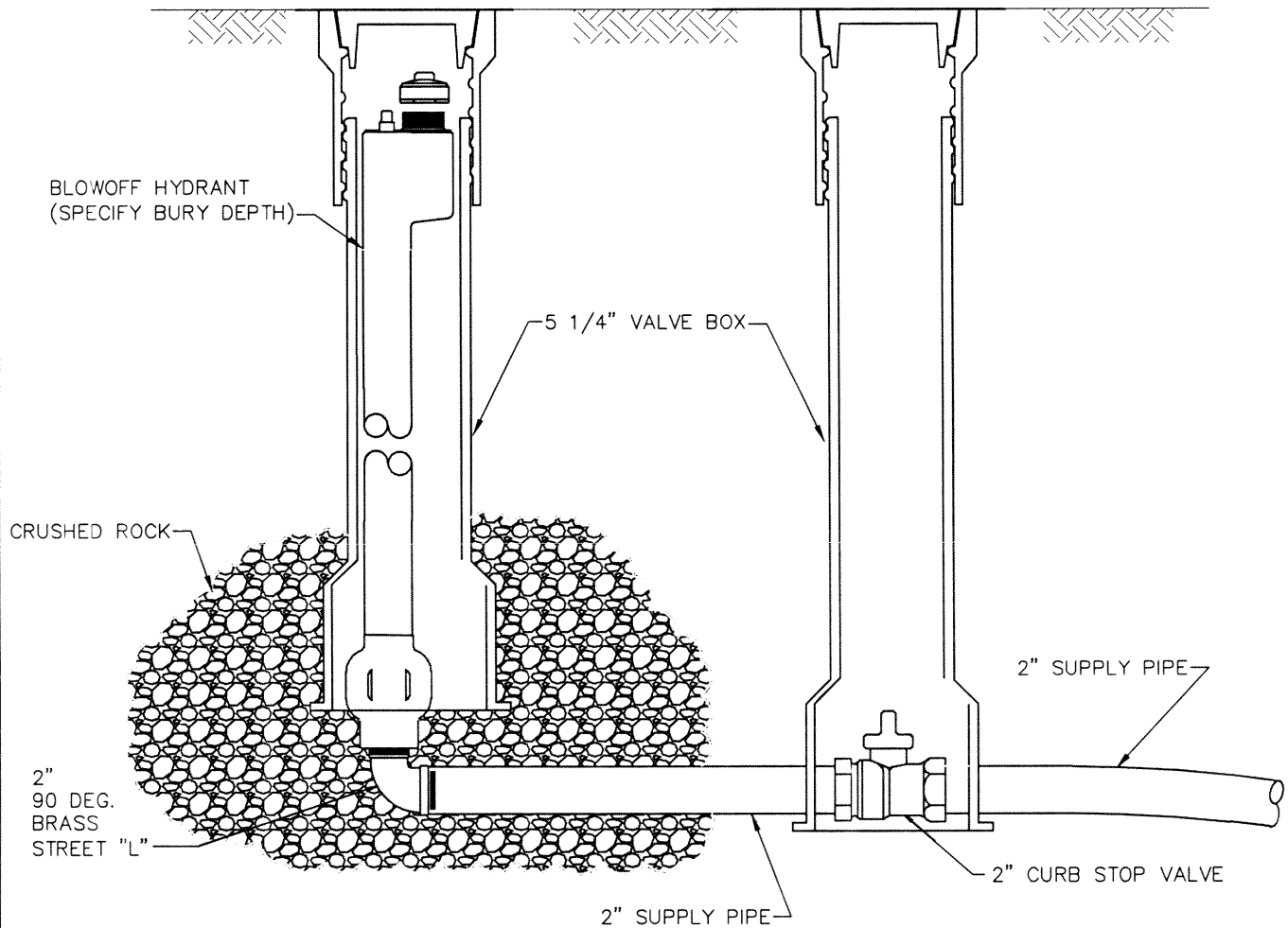
1. PROVIDE EFFECTIVELY CONTINUOUS JOINT RESTRAINT FROM MAIN LINE TEE TO DISCHARGE (USING RETAINER GLANDS AS REQUIRED). SPECIAL RETAINER GLANDS FOR PVC PIPE ARE REQUIRED, SEE SPECIFICATIONS.

BEAR VALLEY  
WATER AUTHORITY  
STANDARD DETAIL

BLOWOFF ASSEMBLY  
DISCHARGE INTO STORM DRAIN

DETAIL No. SD-6





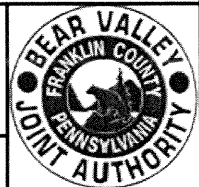
**NOTE:**

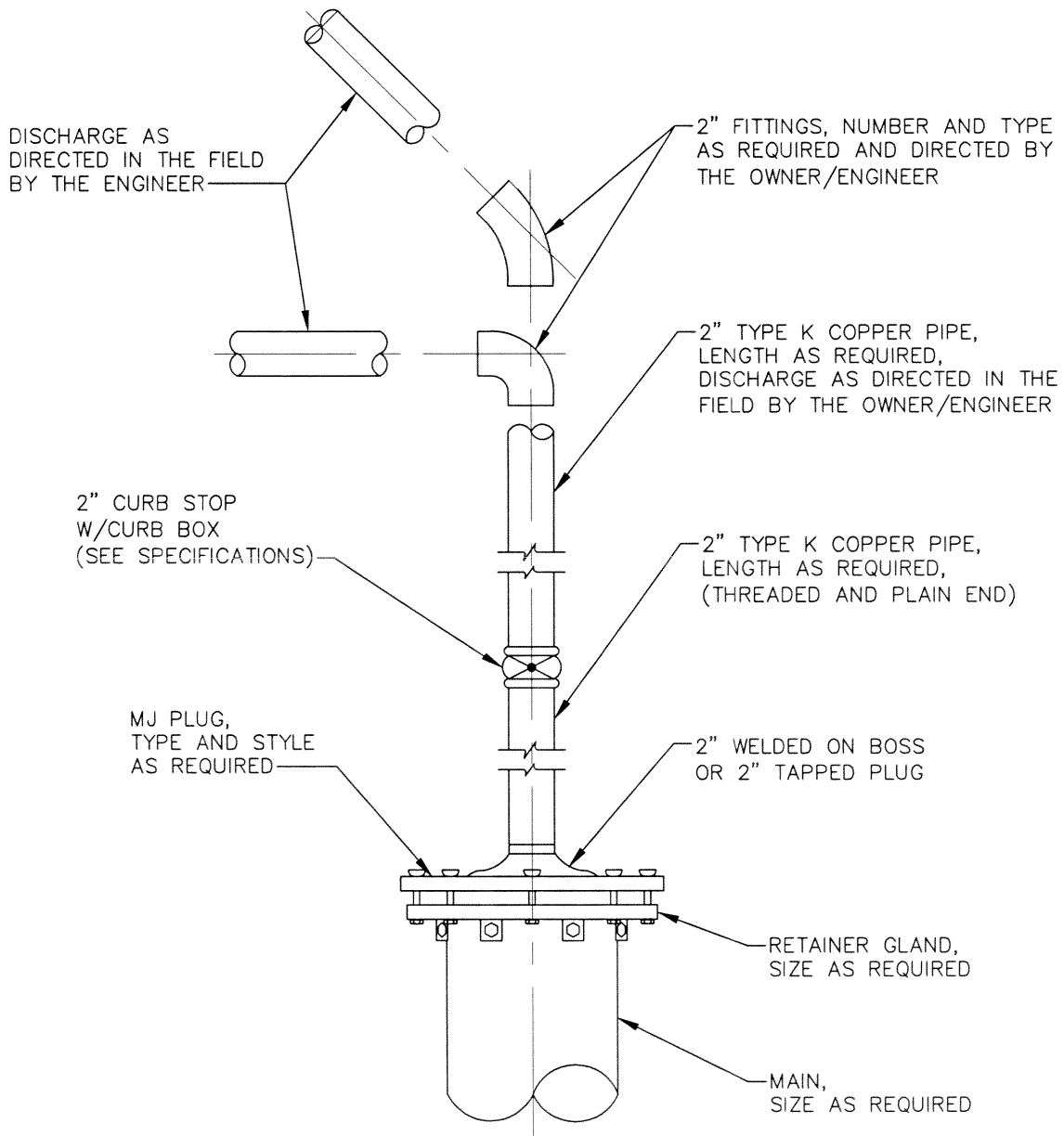
1. HYDRANT SHALL HAVE 2" FIP INLET AND 2" NPT OUTLET. HYDRANT SHALL FIT IN A 5-1/4" VALVE BOX. HYDRANT SHALL BE NON-FREEZING AND SELF DRAINING. HYDRANT SHALL BE OPERATED BY TURNING A TOP MOUNTED 9/16 SQUARE OPERATING NUT COUNTERCLOCKWISE TO OPEN, CLOCKWISE TO CLOSE. HYDRANT MUST SEAL THE DRAIN OUTLET IN ALL POSITIONS FROM 1/4"-OPEN TO FULLY-OPEN. ALL INTERNAL WORKING PARTS, THE INLET, AND THE OUTLET SHALL BE BRASS. ALL WORKING PARTS SHALL BE SERVICEABLE FROM ABOVE WITH NO DIGGING REQUIRED. DISASSEMBLY MUST BE ACCOMPLISHED WITH NO TURNING FORCES APPLIED TO THE HYDRANT BARREL. ALL WEAR PARTS (O-RINGS AND VALVE SEAT) SHALL BE OF COMMONLY AVAILABLE DIMENSIONS AND MATERIAL, AND NONE MAY BE OF VENDOR-UNIQUE DESIGN. HYDRANT SHALL BE THE MODEL TF500 AS MANUFACTURED BY THE KUPFERLE FOUNDRY Co., ST. LOUIS, MO 63102 OR APPROVED EQUAL.

BEAR VALLEY  
WATER AUTHORITY  
STANDARD DETAIL

BLOWOFF HYDRANT

DETAIL No. SD-7

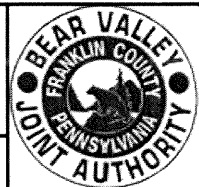




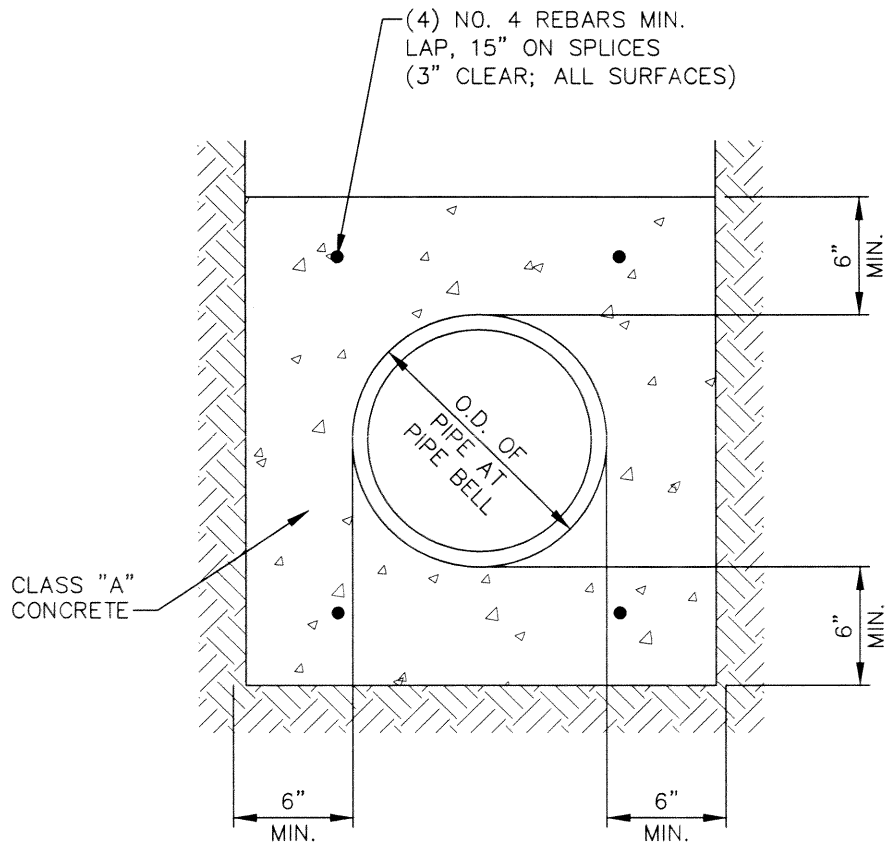
BEAR VALLEY  
WATER AUTHORITY  
STANDARD DETAIL

END-OF-PIPE  
BLOWOFF

DETAIL No. SD-8



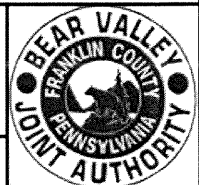


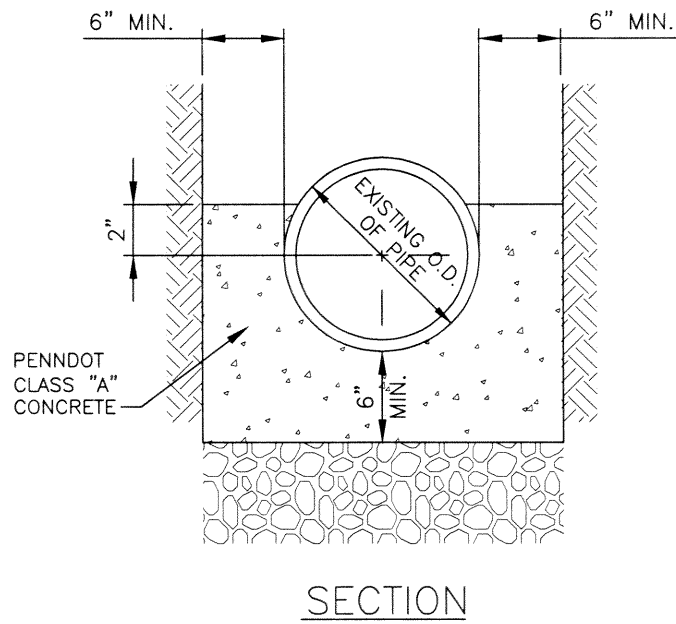
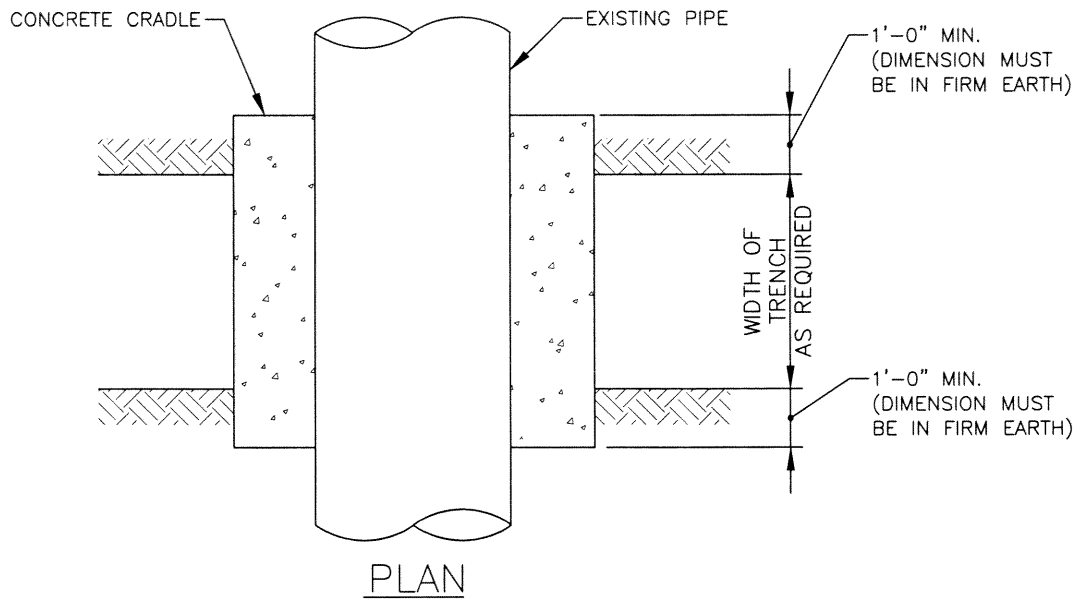


BEAR VALLEY  
WATER AUTHORITY  
STANDARD DETAIL

CONCRETE ENCASEMENT

DETAIL No. SD-10

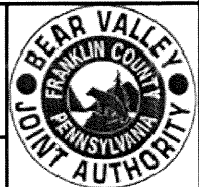


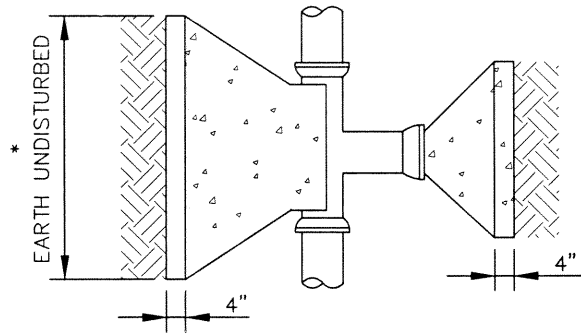


BEAR VALLEY  
WATER AUTHORITY  
STANDARD DETAIL

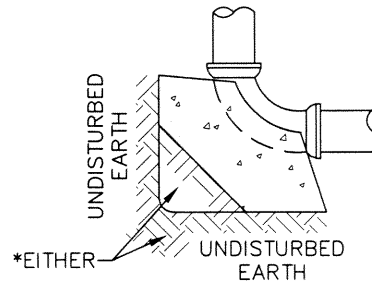
CONCRETE CRADLE

DETAIL No. SD-11

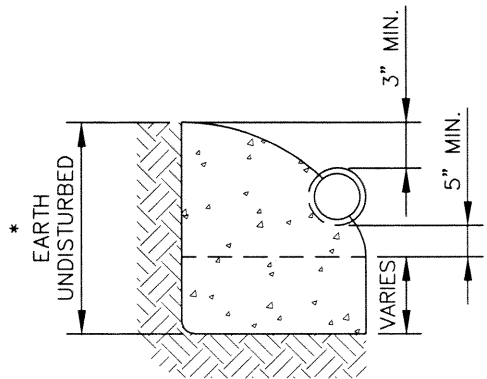




PLAN-TEES, WYES AND PLUGS



PLAN-BENDS



ELEVATION-TEES, WYES AND PLUGS

NOTES:

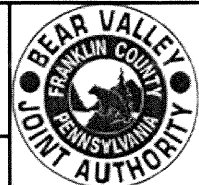
1. ALL TEES, WYES, CROSSES, PLUGS AND BENDS SHALL BE BLOCKED AGAINST FIRM GROUND WITH CONCRETE.
2. EARTH PRESSURE FIGURED AT 4,000 PSF, AREA OF BLOCK MUST BE INCREASED PROPORTIONATELY IF EARTH ENCOUNTERED WILL NOT WITHSTAND THIS PRESSURE IN THE OPINION OF THE ENGINEER.
3. TABLE IS BASED UPON 225 PSI OR 150 LBS. WORKING PRESSURE PLUS 50% WATER HAMMER.
4. \* - DENOTES FACE AREA NOT LESS THAN SHOWN IN TABLE.

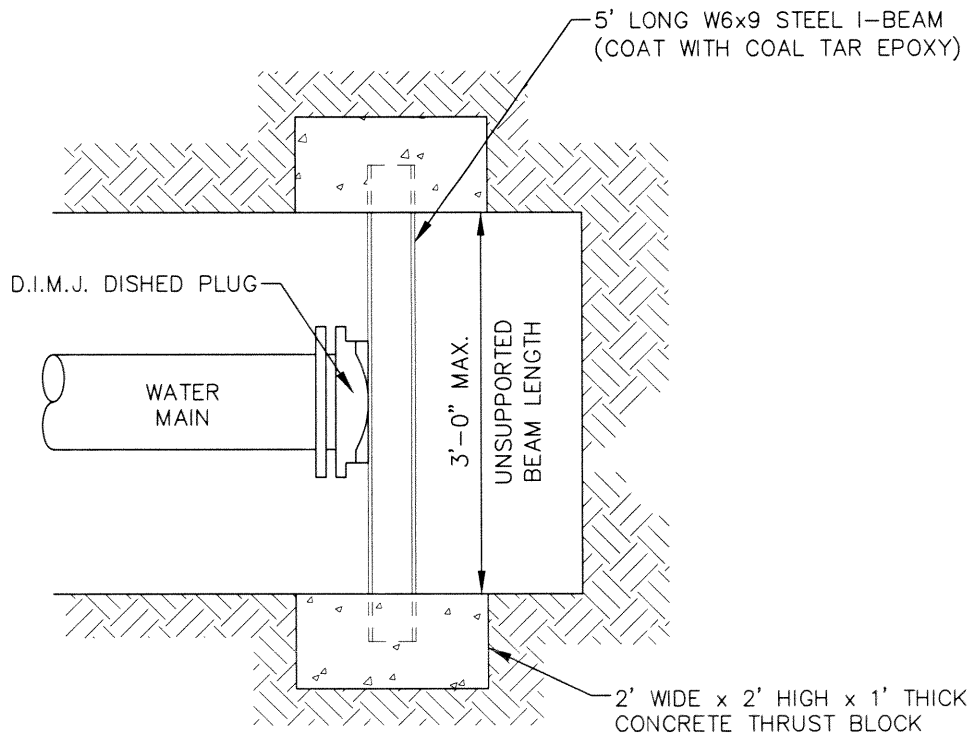
PIPE SIZE (IN.)	AREA (SQ. IN.)	TOTAL FORCE (LBS.)	AREA OF BLOCK IN SQ. FT.				
			TEES & PLUGS	90° BENDS	45° BENDS	22 1/2° BENDS	11 1/4° BENDS
4	12.57	2,827	1.0	1.0	1.0	1.0	1.0
6	28.27	6,361	1.6	2.3	1.2	1.0	1.0
8	50.26	11,308	2.8	4.0	2.2	1.1	1.0
10	78.54	17,672	4.4	6.3	3.4	1.7	1.0
12	113.16	25,461	6.4	9.0	4.9	3.0	1.3
14	153.94	34,637	8.7	12.3	6.6	3.4	1.7
16	201.06	45,239	11.3	16.0	8.7	4.4	2.2
18	254.47	57,256	14.3	20.3	11.0	5.6	2.8
20	314.16	70,686	17.7	25.0	13.5	6.9	3.5
24	452.39	101,788	25.4	36.0	19.5	9.9	5.0

BEAR VALLEY  
WATER AUTHORITY  
STANDARD DETAIL

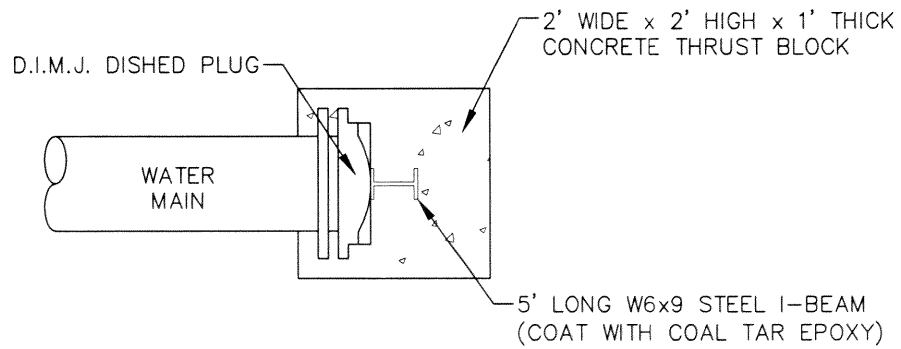
CONCRETE THRUST BLOCKING

DETAIL No. SD-12





PLAN

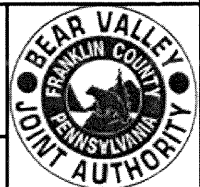


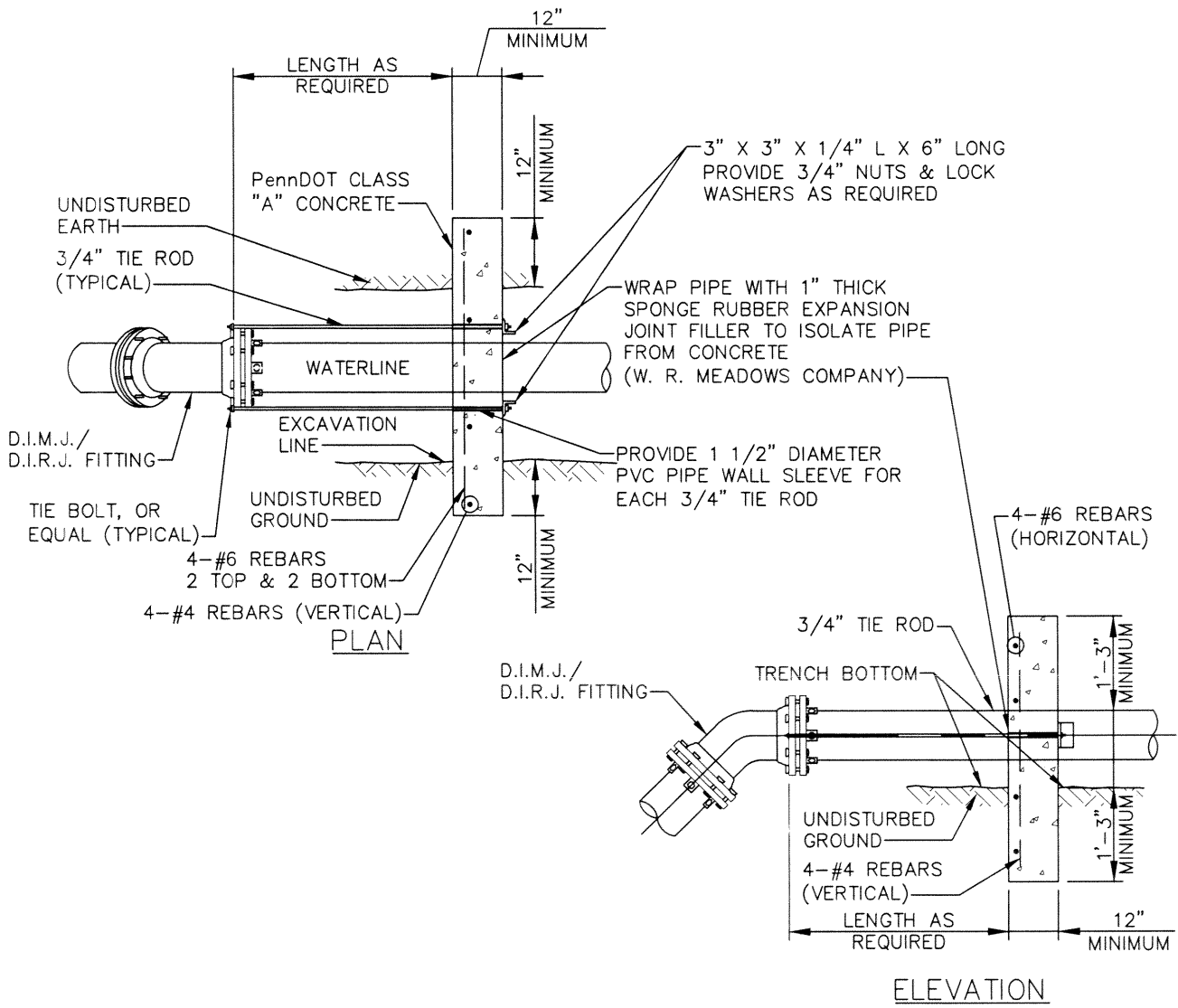
ELEVATION

BEAR VALLEY  
WATER AUTHORITY  
STANDARD DETAIL

DEADMAN

DETAIL No. SD-13





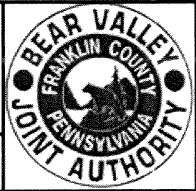
**NOTES:**

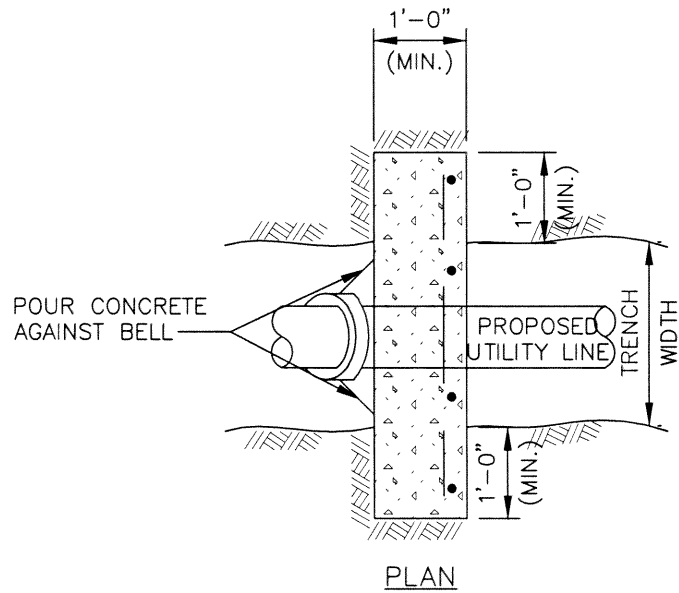
1. ALL TIE RODS, TIE BOLTS & ANGLES SHALL BE SURFACE PREPARED AND COATED WITH BITUMINOUS COATING PER SPECIFICATIONS.
2. 4 TIE RODS REQUIRED PER JOINT FOR 4", 6", 8", 10" AND 12" DIAMETER PIPE.
3. 8 TIE RODS REQUIRED PER JOINT FOR 16" DIAMETER PIPE.
4. 10 TIE RODS REQUIRED PER JOINT FOR 20" DIAMETER PIPE.
5. 12 TIE RODS REQUIRED PER JOINT FOR 24" DIAMETER PIPE.
6. ALL CONCRETE ANCHORS MUST BE CURED A MINIMUM OF 7 DAYS BEFORE TIGHTENING TIE RODS.
7. TIE RODS, NUTS, BOLTS, COUPLINGS, AND WASHERS SHALL BE SUPER STAR SYSTEM BY STAR SUPPLY COMPANY, COLUMBUS, OHIO OR, APPROVED EQUAL AND INSTALLED AS PER MANUFACTURER'S RECOMMENDATIONS.

BEAR VALLEY  
 WATER AUTHORITY  
 STANDARD DETAIL

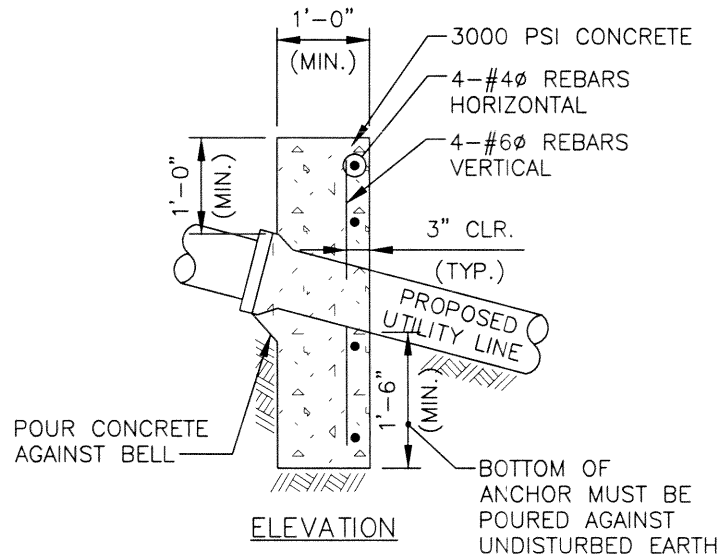
REINFORCED CONCRETE  
 DEADMAN

DETAIL No. SD-14





PLAN



ELEVATION

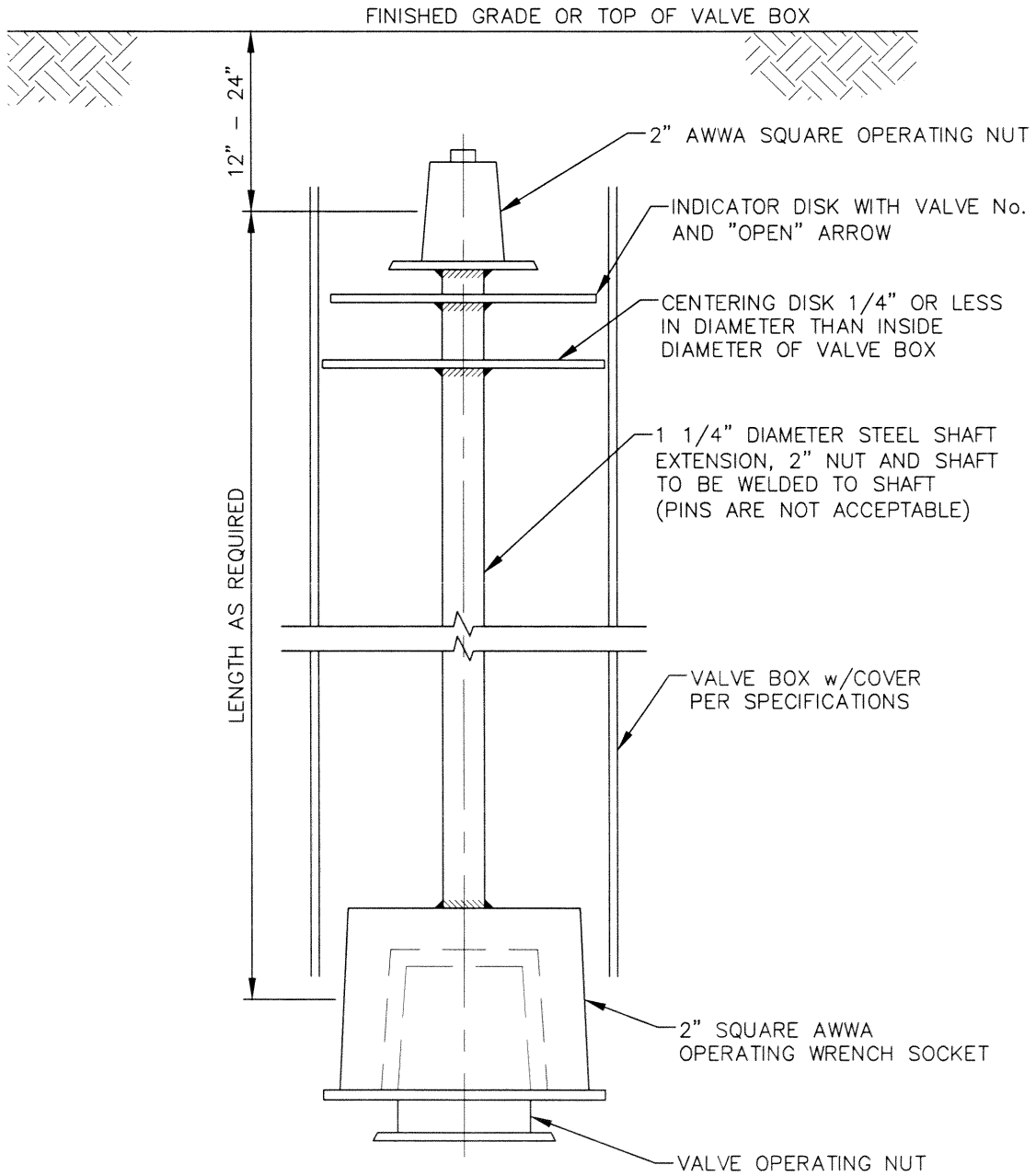
NOTES:

1. CONCRETE ANCHORS TO BE PLACED AGAINST DOWNGRADE SIDE OF PIPE JOINT.
2. SLOPES 20° OR GREATER PIPES SHALL BE ANCHORED SECURELY WITH CONCRETE ANCHORS SPACED AS FOLLOWS:  
 NOT OVER 36' CENTER TO CENTER ON GRADES 20% TO 35%  
 NOT OVER 24' CENTER TO CENTER ON GRADES 35% TO 50%  
 NOT OVER 16' CENTER TO CENTER ON GRADES 50% AND OVER

BEAR VALLEY  
 WATER AUTHORITY  
 STANDARD DETAIL

CONCRETE  
 SLOPE ANCHOR  
 DETAIL No. SD-15

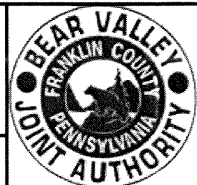


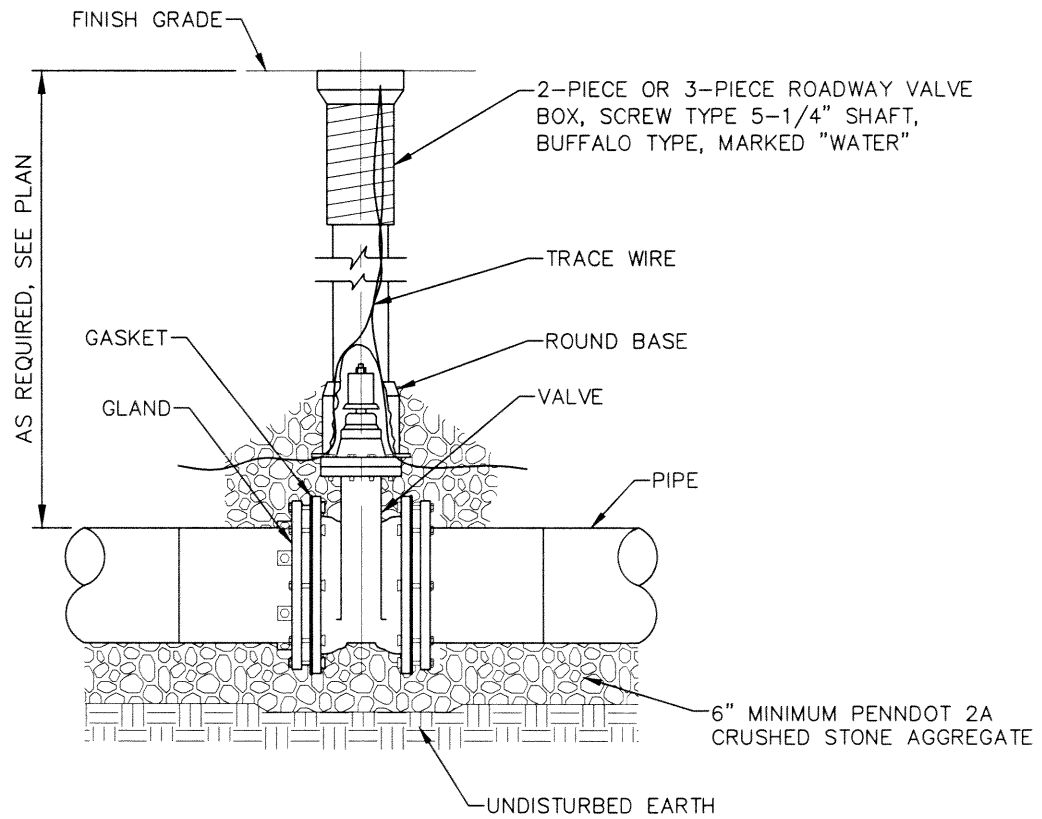


BEAR VALLEY  
WATER AUTHORITY  
STANDARD DETAIL

EXTENDED VALVE OPERATOR

DETAIL No. SD-16





NOTE:

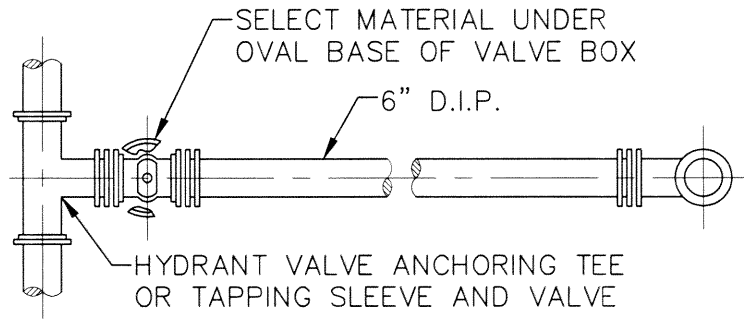
1. VALVE BOX NOI TO REST OR COME IN CONTACT WITH VALVE.

BEAR VALLEY  
WATER AUTHORITY  
STANDARD DETAIL

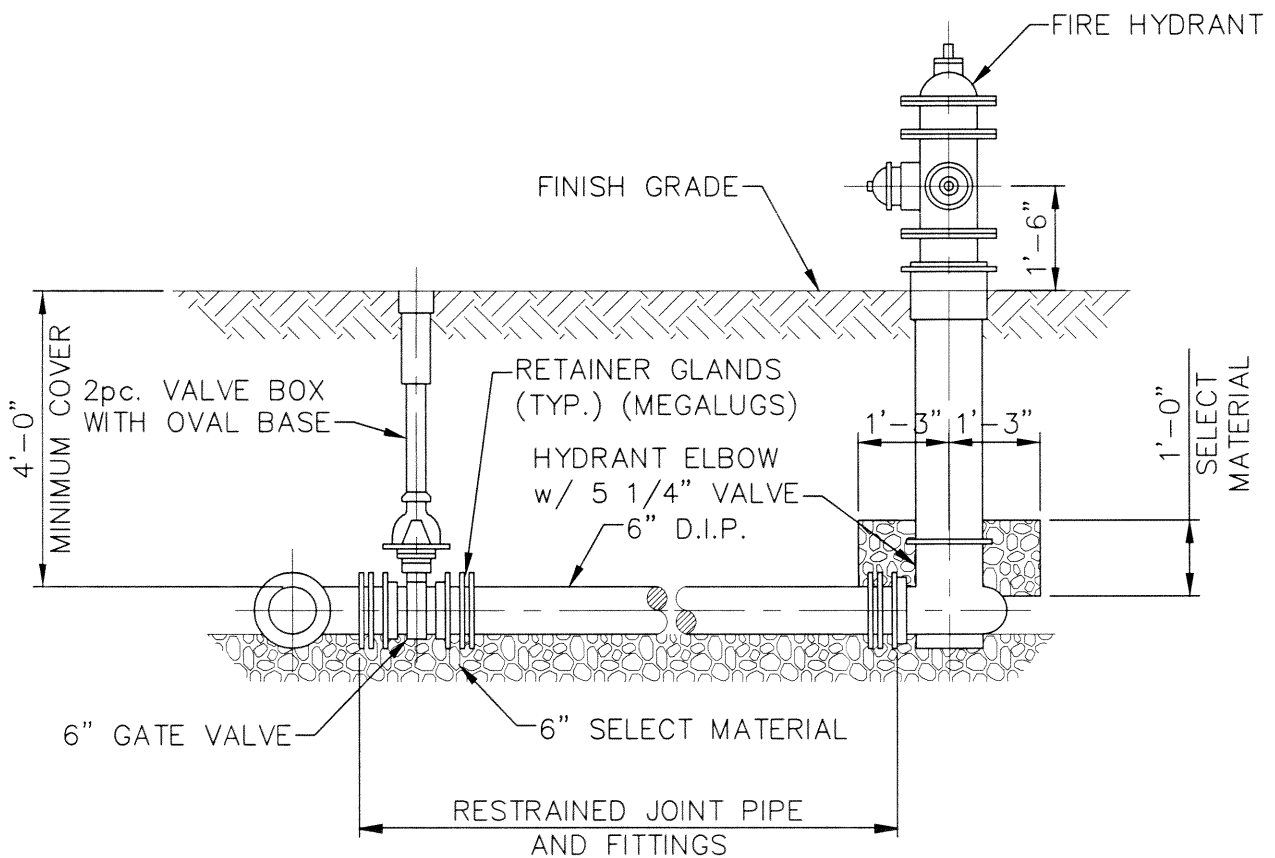
ROADWAY VALVE BOX

DETAIL No. SD-17





PLAN



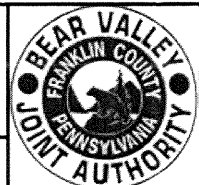
ELEVATION

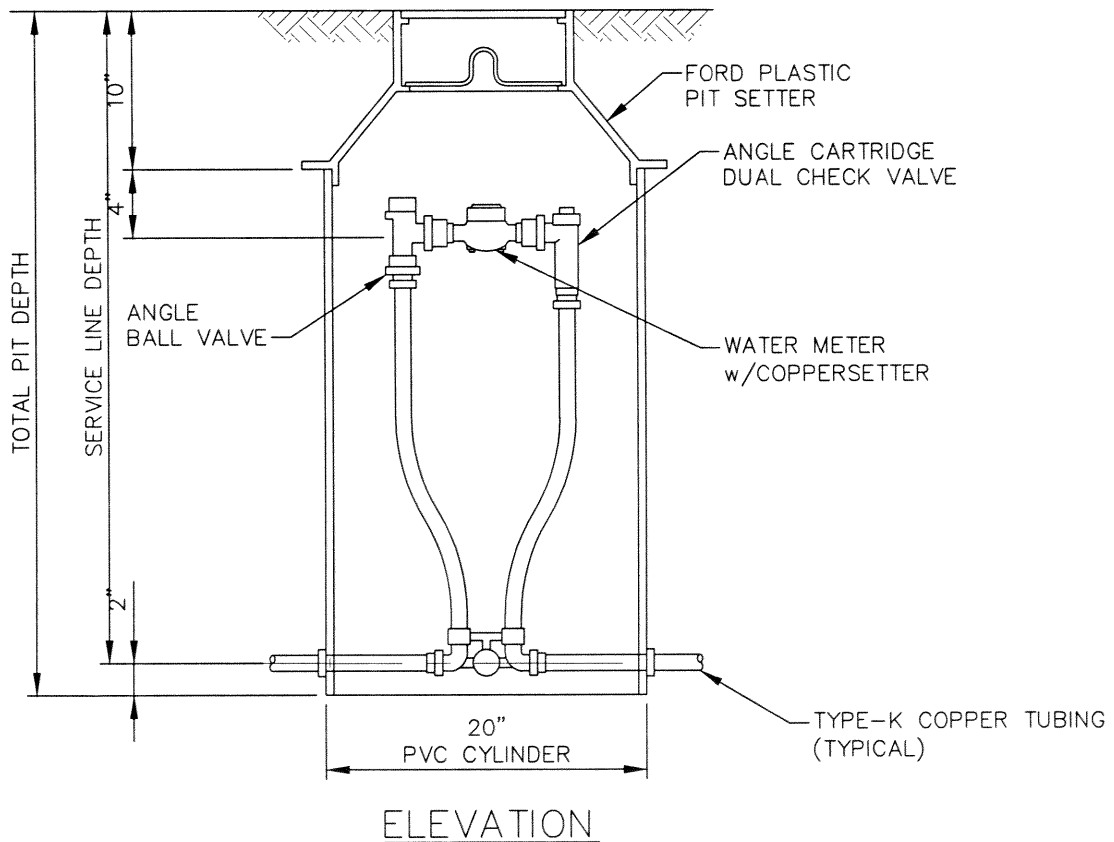
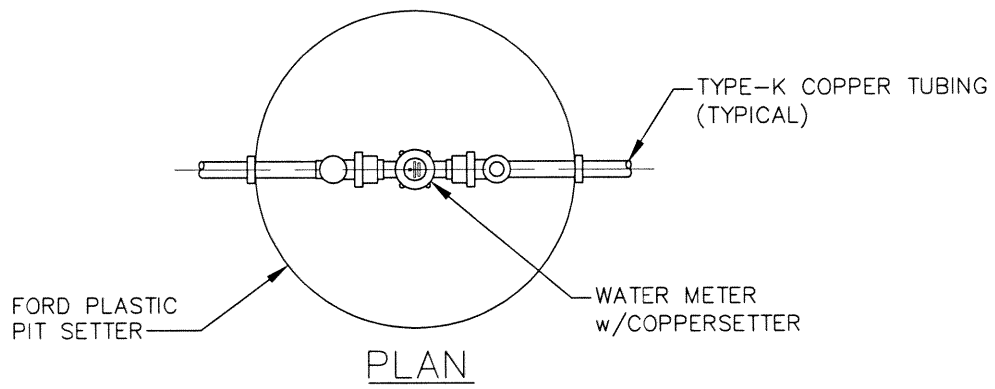
NOTE:  
DRAIN HOLE IN HYDRANT MUST NOT  
BE OBSTRUCTED WITH CONCRETE.

BEAR VALLEY  
WATER AUTHORITY  
STANDARD DETAIL

FIRE HYDRANT  
INSTALLATION

DETAIL No. SD-18



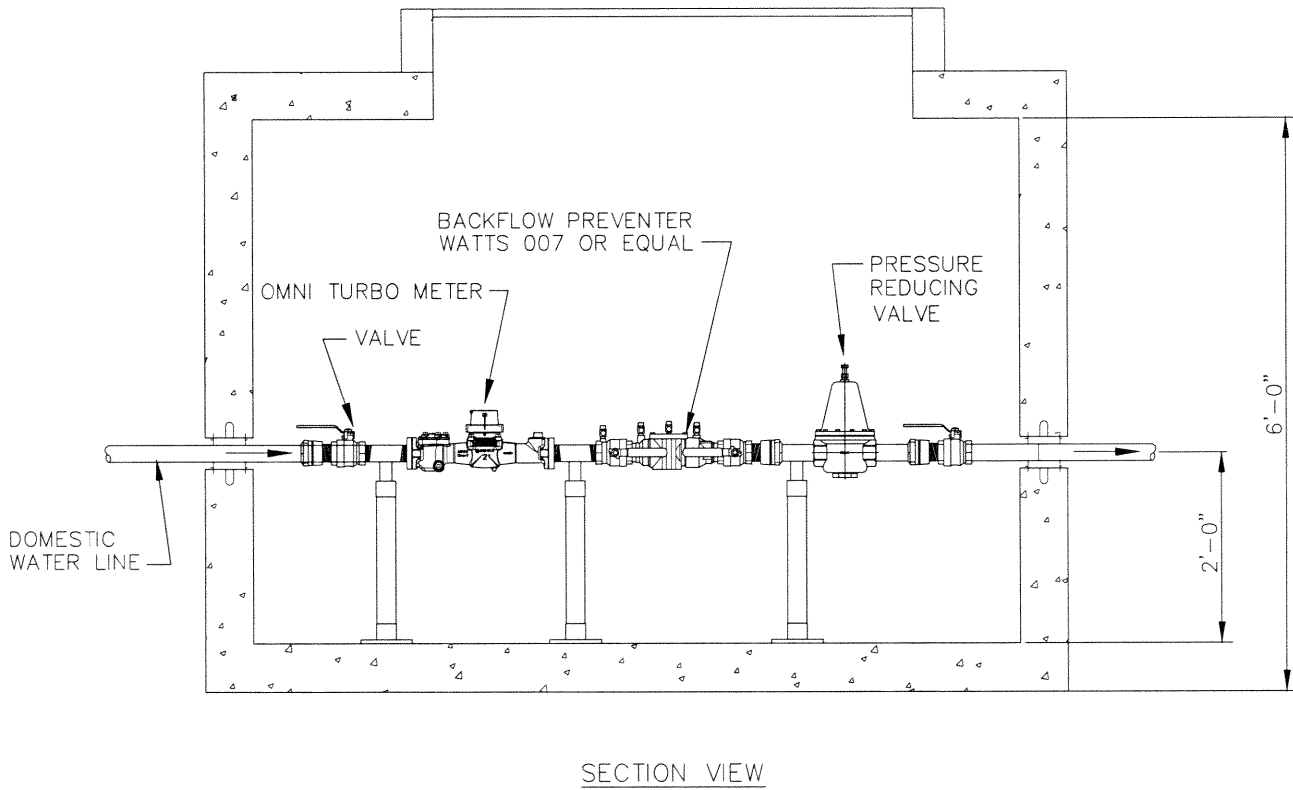
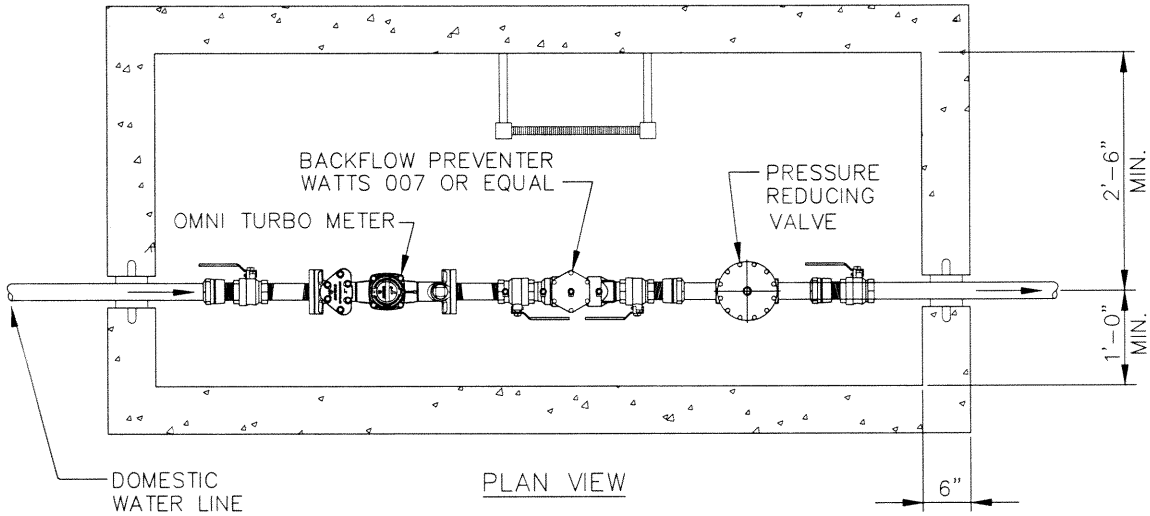


BEAR VALLEY  
WATER AUTHORITY  
STANDARD DETAIL

WATER METER PIT

DETAIL No. SD-19



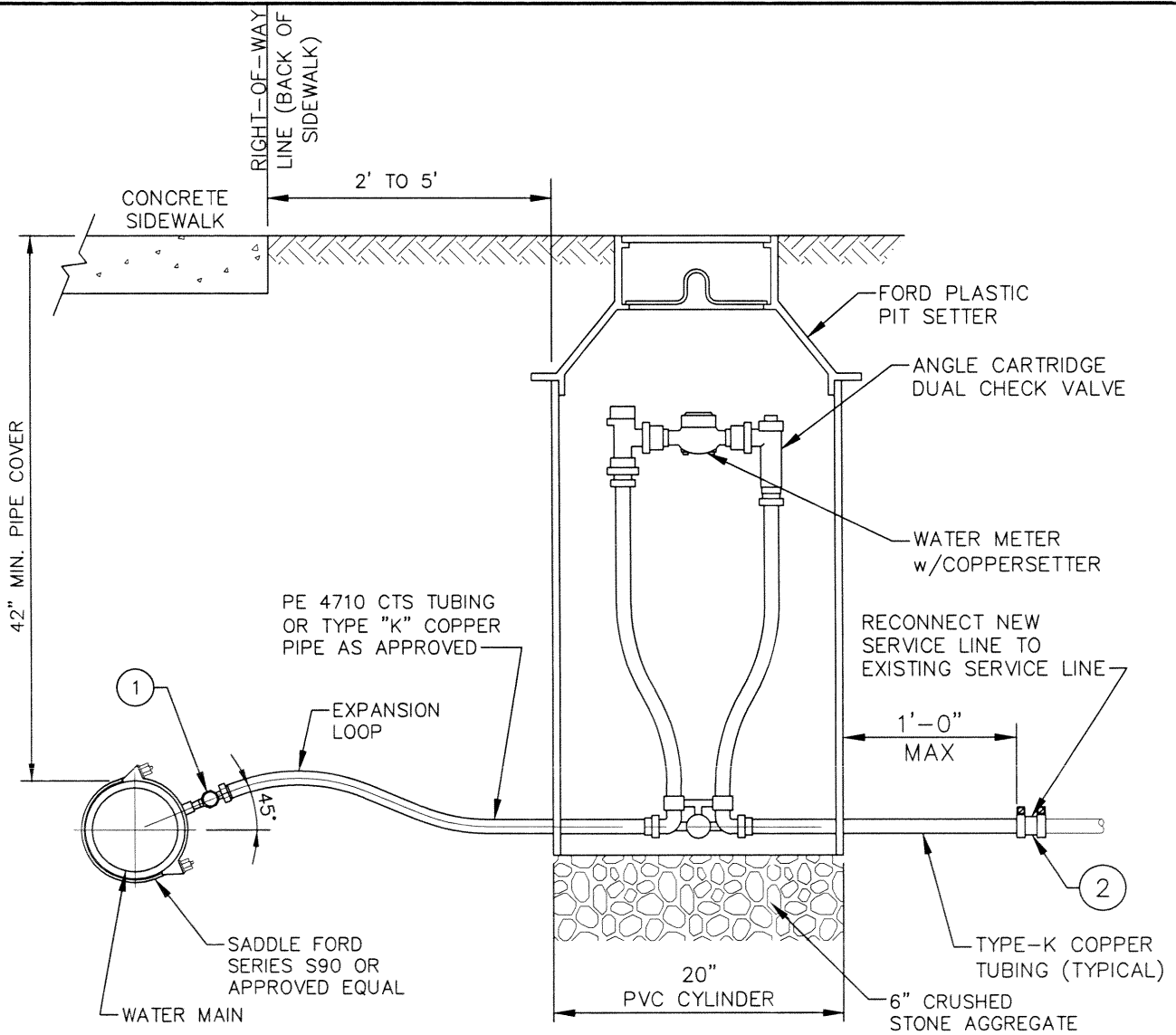


BEAR VALLEY  
WATER AUTHORITY  
STANDARD DETAIL

2" WATER SERVICE  
METER VAULT

DETAIL No. SD-20





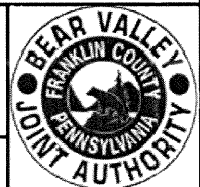
PLAN NOTES:

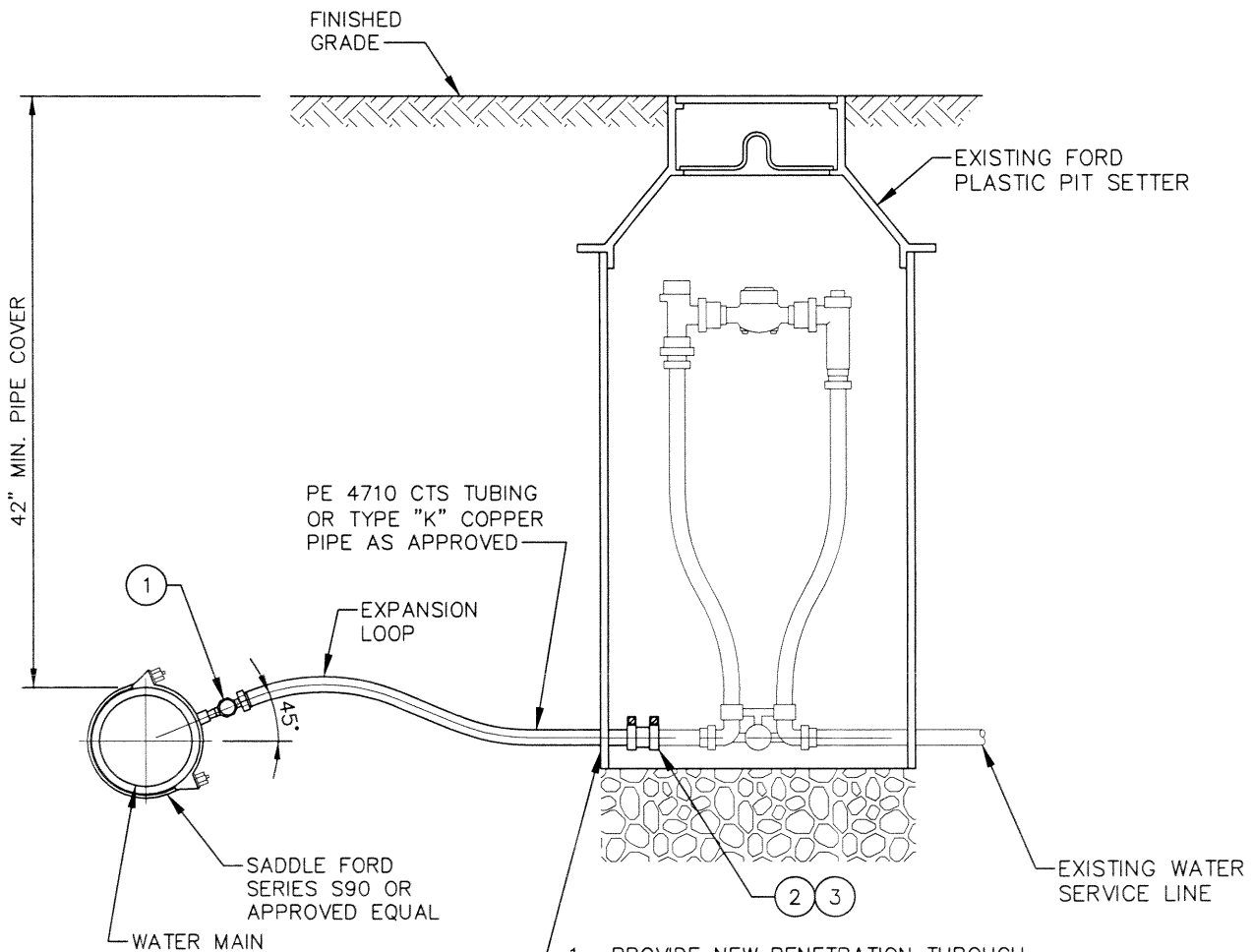
- ① BALL CORPORATION STOP, FORD FB-1000 SERIES
- ② 3/4" THRU 2" JOINT COUPLING (COMPRESSION UNION),  
 FORD METER Co. CAT. Nos.  
 C44-33 - 3/4" COPPER TO COPPER OR PLASTIC TUBING  
 C44-44 - 1" COPPER TO COPPER OR PLASTIC TUBING  
 C44-66 - 1 1/2" COPPER TO COPPER OR PLASTIC TUBING  
 C44-77 - 2" COPPER TO COPPER OR PLASTIC TUBING

BEAR VALLEY  
 WATER AUTHORITY  
 STANDARD DETAIL

WATER SERVICE CONNECTION

DETAIL No. SD-21





1. PROVIDE NEW PENETRATION THROUGH EXISTING METER PIT, AS REQUIRED FOR PROPER CONNECTION. PROVIDE WATER TIGHT SEAL AROUND PIPE AT PENETRATION.
2. REMOVE AND DISPOSE EXISTING SERVICE LINE AS REQUIRED. CLOSE/SEAL ABANDONED PENETRATIONS THROUGH EXISTING METER PIT AS REQUIRED

**NOTE:**

SEE PLAN SHEETS FOR NEW OR EXISTING SERVICE LINE SIZE AND LOCATION REQUIREMENTS. EXPLORATORY EXCAVATION IS REQUIRED TO DETERMINE SIZE, TYPE AND LOCATION OF EXISTING SERVICE LINES TO BE CONNECTED.

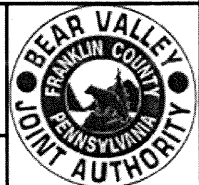
**PLAN NOTES:**

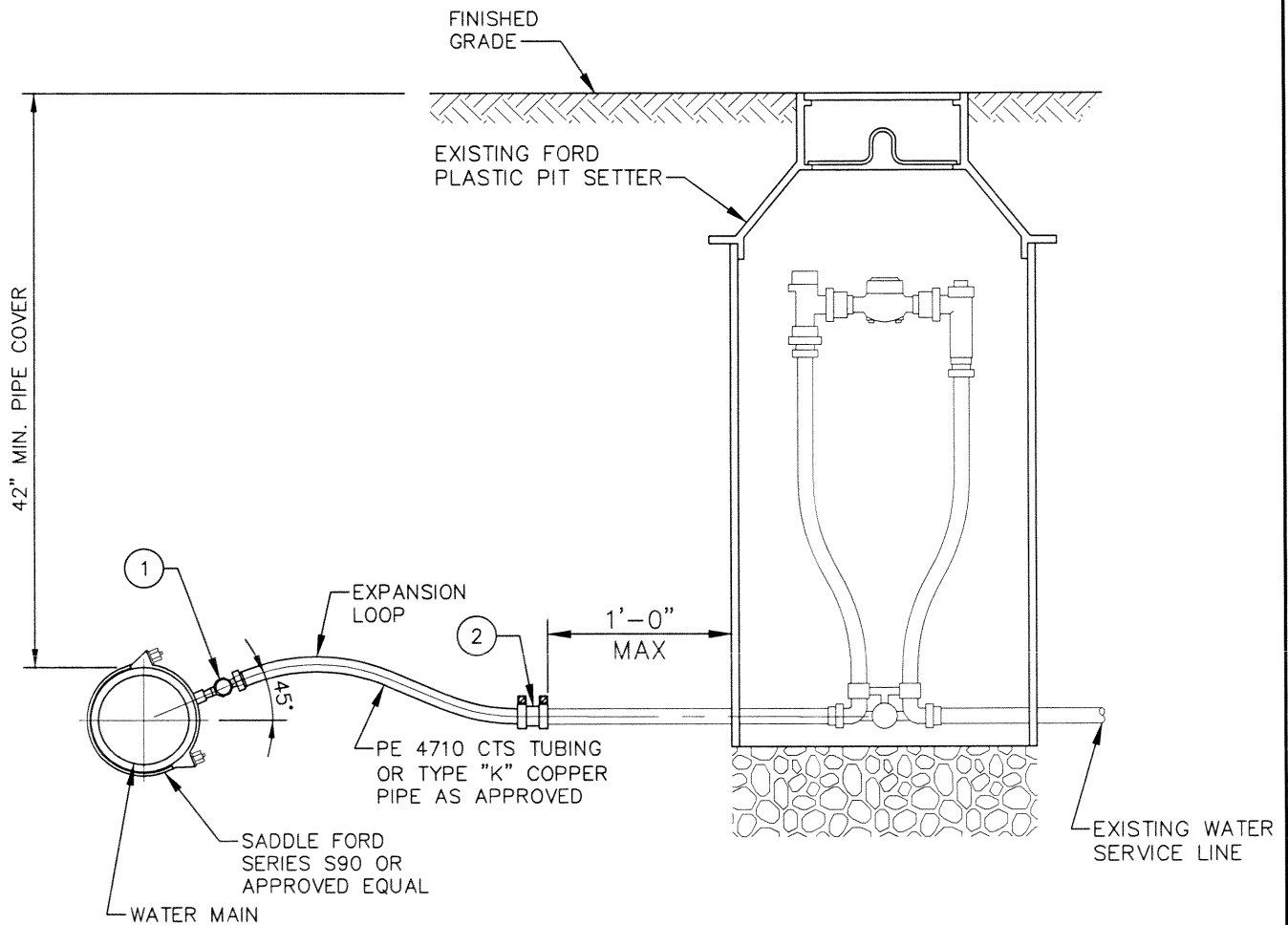
- ① BALL CORPORATION STOP, FORD FB-1000 SERIES
- ② 3/4" THRU 2" JOINT COUPLING (COMPRESSION UNION), FORD METER Co. CAT. Nos.  
 C44-33 - 3/4" COPPER TO COPPER OR PLASTIC TUBING  
 C44-44 - 1" COPPER TO COPPER OR PLASTIC TUBING  
 C44-66 - 1 1/2" COPPER TO COPPER OR PLASTIC TUBING  
 C44-77 - 2" COPPER TO COPPER OR PLASTIC TUBING
- ③ PROVIDE CONNECTION OF NEW SERVICE LINE TO EXISTING METER SETTER WITHIN METER BOX

BEAR VALLEY  
WATER AUTHORITY  
STANDARD DETAIL

WATER SERVICE  
RE-CONNECTION  
(INSIDE METER PIT)

DETAIL No. SD-22





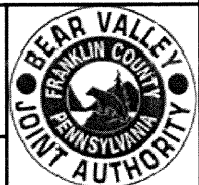
**PLAN NOTES:**

- ① BALL CORPORATION STOP, FORD FB-1000 SERIES
- ② 3/4" THRU 2" JOINT COUPLING (COMPRESSION UNION),  
 FORD METER Co. CAT. Nos.  
 C44-33 - 3/4" COPPER TO COPPER OR PLASTIC TUBING  
 C44-44 - 1" COPPER TO COPPER OR PLASTIC TUBING  
 C44-66 - 1 1/2" COPPER TO COPPER OR PLASTIC TUBING  
 C44-77 - 2" COPPER TO COPPER OR PLASTIC TUBING

BEAR VALLEY  
 WATER AUTHORITY  
 STANDARD DETAIL

WATER SERVICE  
 RE-CONNECTION  
 (OUTSIDE METER PIT)

DETAIL No. SD-23

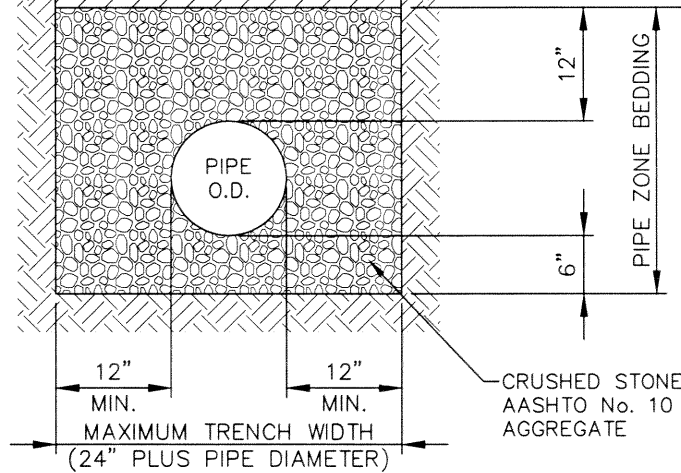


SEE APPLICABLE TRENCH RESTORATION DETAIL

EXISTING SUBGRADE

PROVIDE COMPACTED FULL DEPTH COARSE AGGREGATE SELECT BACKFILL PENNDOT 2RC, FOR FULL DEPTH OF BACKFILL

UTILITY LINE MARKING TAPE



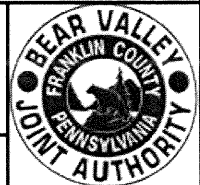
**NOTES:**

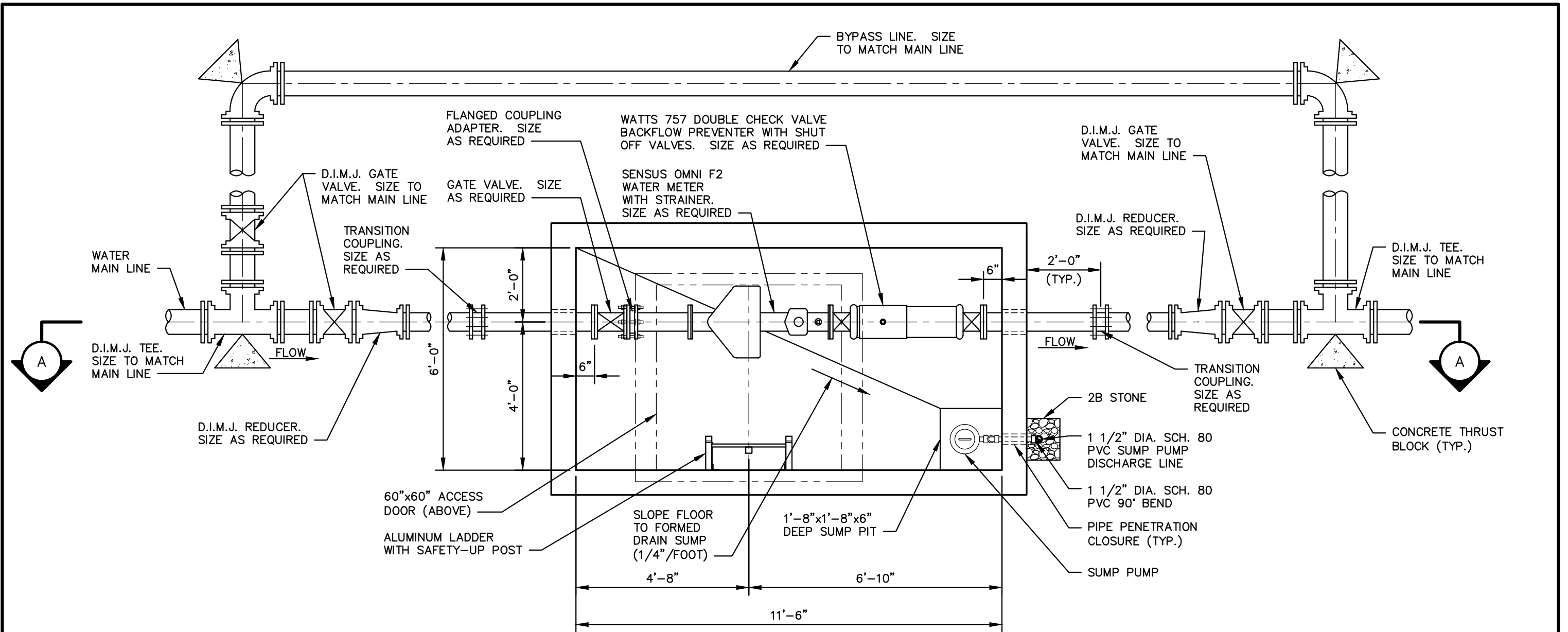
1. ALL PIPE BEDDING AND BACKFILL MATERIALS SHALL BE FURNISHED AND INSTALLED AS PER SPECIFICATIONS.
2. IF ROCK, HARD SHALE, OR UNYIELDING MATERIAL IS ENCOUNTERED, AS DETERMINED BY THE ENGINEER, IT MUST BE REMOVED TO AN ELEVATION AT LEAST 6" BELOW THE BOTTOM OF THE PIPE AND REPLACED WITH 6" OF CRUSHED AGGREGATE.

BEAR VALLEY  
WATER AUTHORITY  
STANDARD DETAIL

PIPE BEDDING AND  
TRENCH BACKFILLING

DETAIL No. SD-24



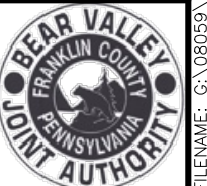


**METER VAULT PLAN**

**BEAR VALLEY  
WATER AUTHORITY  
STANDARD DETAIL**

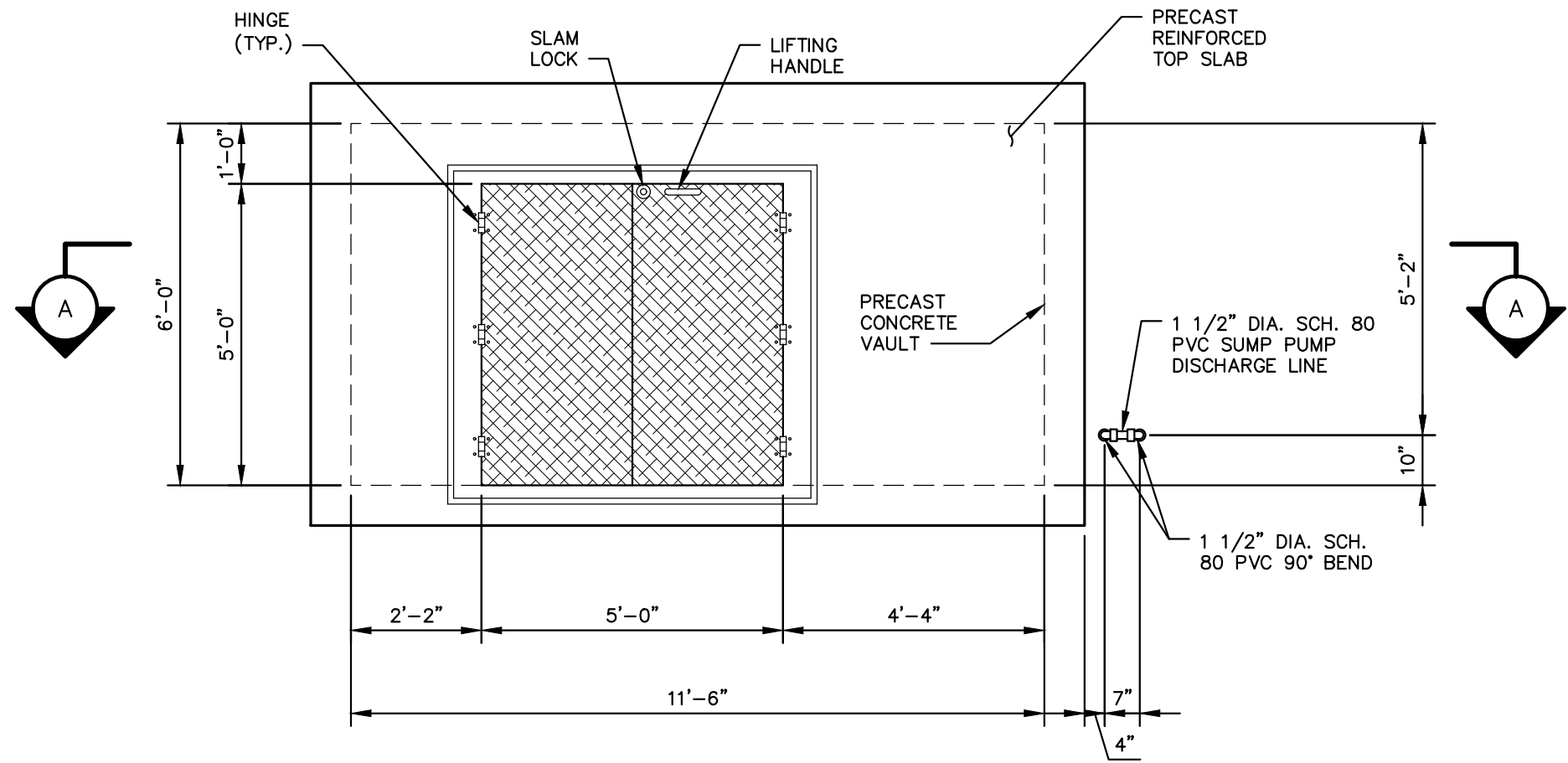
**4"x6"x OR 8" DOMESTIC  
AND FIRE LINE COMBINATION  
METER VAULT PLAN**

**DETAIL No. SD-25-1**



**NOTES:**

1. CONTRACTOR SHALL COORDINATE PRECAST STRUCTURES AND ACCESS DOOR INSTALLATIONS WITH PRECAST CONCRETE MANUFACTURER/SUPPLIER. HATCH SHALL BE RATED FOR H-20 LOADING.
2. WALL AND SLAB THICKNESS FOR PRECAST STRUCTURES TO BE DETERMINED BY PRECAST CONCRETE MANUFACTURER/SUPPLIER. THOSE SHOWN ARE ASSUMED AND USED FOR LAYOUT DIMENSIONS. VAULT SHALL BE DESIGNED TO WITHSTAND H-20 TRAFFIC LOADING. VAULT SHALL BE WATERTIGHT.
3. EXCAVATE AREA TO AN ELEVATION AT LEAST 6" BELOW THE BOTTOM OF THE PROPOSED FOUNDATION BASE MAT.
4. PLACE 6" OF AGGREGATE (AASHTO NO. 57) CRUSHED STONE SUBBASE UP TO BOTTOM OF PROPOSED CONCRETE FOUNDATION BASE MAT. BACKFILL VAULT WITH AASHTO NO. 57 CRUSHED STONE.
5. STRUCTURAL DESIGN OF ENTIRE PRECAST STRUCTURES SHALL BE BY THE MANUFACTURER, INCLUDING PRECAST TOP SLAB AND CONCRETE BASE MAT. UPLIFT RESISTANCE DUE TO POSSIBILITY OF HIGH GROUND WATER AND EMPTY TANK SHALL BE ACCOUNTED FOR. USE 2,000 PSF ALLOWABLE SOIL BEARING PRESSURE.
6. PRECAST STRUCTURES SHALL BE MANUFACTURED PER ASTM C-478, 5000 PSI AT 28 DAYS.
7. ALL PIPING, VALVES AND APPURTENANCES IN PRECAST STRUCTURE SHALL BE CLASS 52 FLANGED DUCTILE IRON (DOUBLE CEMENT LINED).
8. EXTERIOR SURFACES OF ALL DUCTILE IRON PIPING, VALVES AND APPURTENANCES INSIDE VAULT SHALL RECEIVE EPOXY PRIMER AND FINISH COAT.
9. ALL HARDWARE AND PIPE SUPPORTS SHALL BE TYPE 316 STAINLESS STEEL.
10. REQUIRED BEARING PRESSURE (DESIGN) = 2,000 PSF.
11. DUCTILE IRON PIPE SHALL CONFORM TO AWWA C151.
12. FITTINGS SHALL CONFIRM TO AWWA C110, AWWA C153 AND AWWA C606.
13. ALL DUCTILE IRON PIPE SHALL BE INSTALLED IN ACCORDANCE WITH ANSI/AWWA C600.
14. GATE VALVES SHALL BE PROVIDED IN ACCORDANCE WITH AWWA C515.
15. GATE VALVES SHALL BE NON RISING STEM, INCLUDE A HAND WHEEL OPERATOR AND OPEN LEFT.



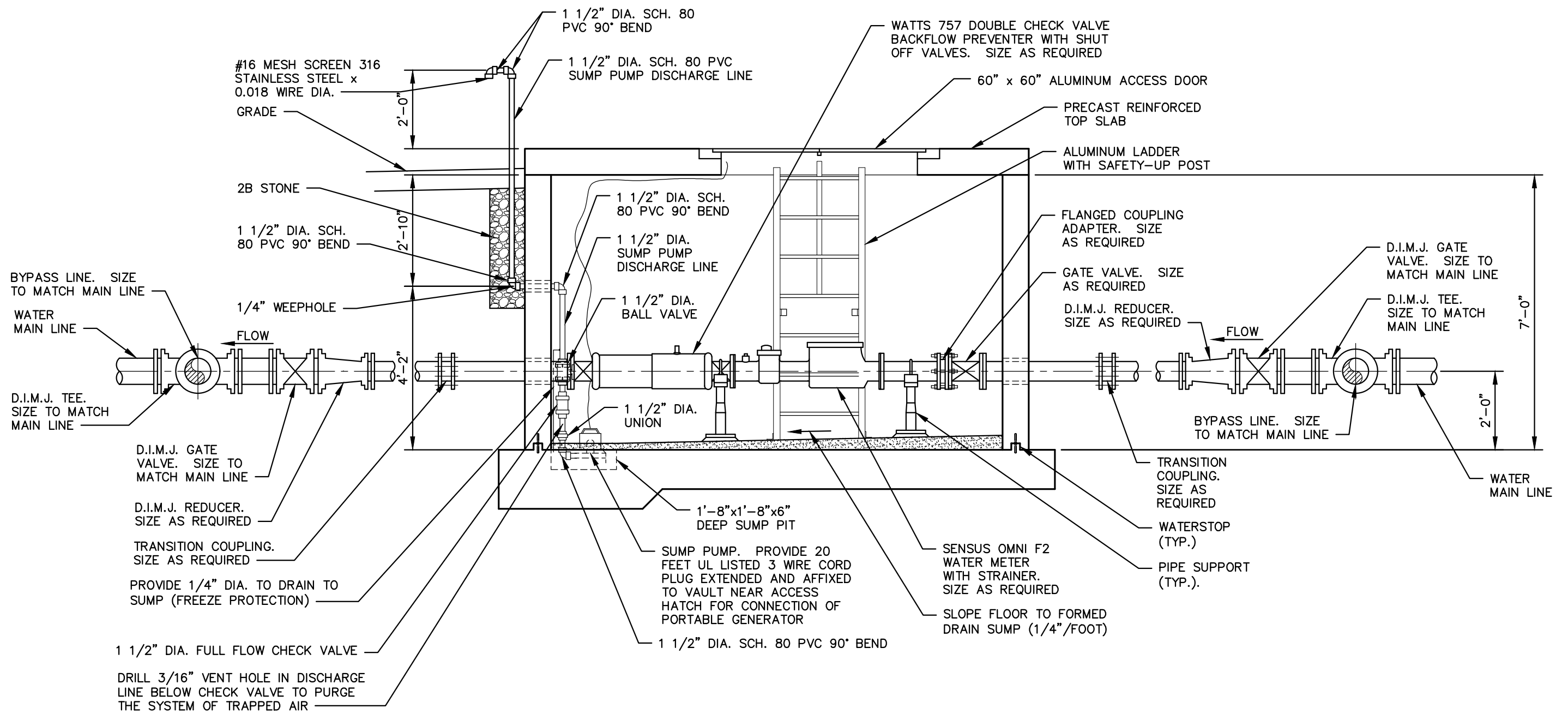
**METER VAULT TOP PLAN**

**BEAR VALLEY  
WATER AUTHORITY  
STANDARD DETAIL**

**4"x6"x OR 8" DOMESTIC  
AND FIRE LINE COMBINATION  
METER VAULT TOP PLAN**

**DETAIL No. SD-25-2**





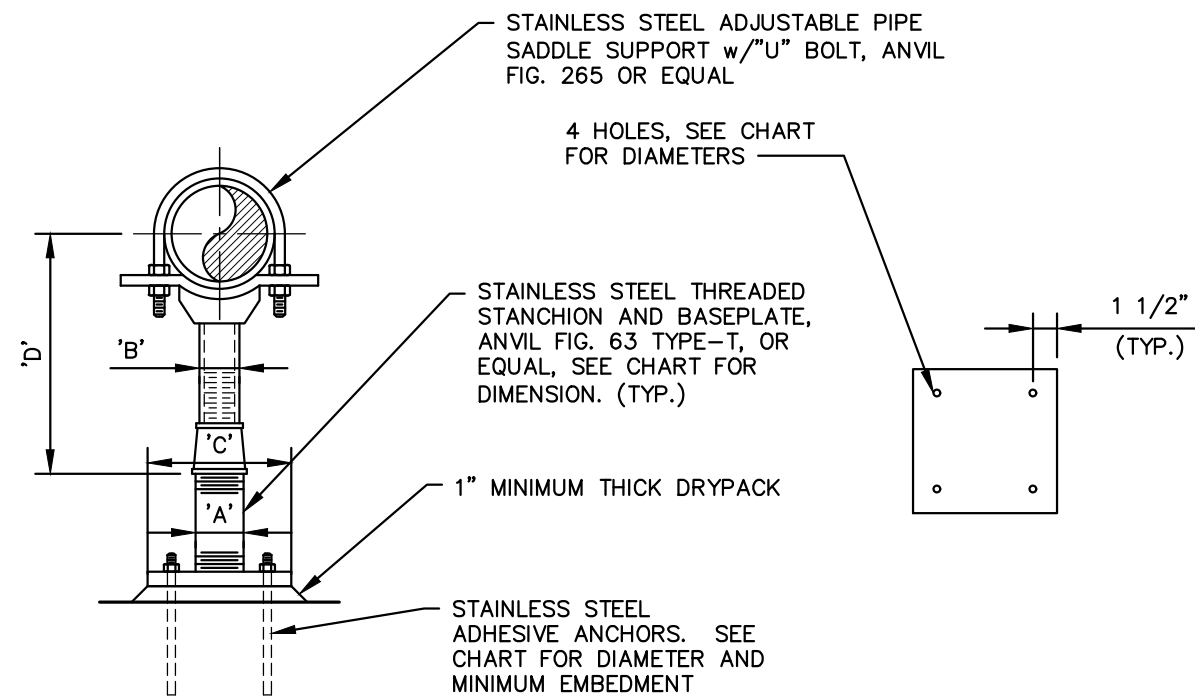
**SECTION A-A**

**BEAR VALLEY  
WATER AUTHORITY  
STANDARD DETAIL**

**4"x6"x OR 8" DOMESTIC  
AND FIRE LINE COMBINATION  
METER VAULT SECTION**

**DETAIL No. SD-25-3**





ADJUSTABLE PIPE SUPPORT CHART								
PIPE DIA.	NOMINAL PIPE SIZE 'A'	NOMINAL PIPE SIZE 'B'	'C'	'D' MINIMUM	'D' MAXIMUM	STAINLESS STEEL ADHESIVE ANCHOR DIA.	MINIMUM EMBEDMENT	BASE PLATE HOLE DIA.
4	4	3	3/8x8x8	9 1/2	14	1/2	4	5/8
6				10 3/4	15 1/4			
8				12 1/4	16 3/4			

NOTE: SEE MANUFACTURER FOR ADDITIONAL INFORMATION

\*ADJUSTABLE PIPE SADDLE SUPPORT, ANVIL FIG. 264 STAINLESS STEEL OR EQUAL

**ADJUSTABLE PIPE SUPPORT**

<b>BEAR VALLEY WATER AUTHORITY STANDARD DETAIL</b>	<b>4"x6"x OR 8" DOMESTIC AND FIRE LINE COMBINATION METER VAULT SECTION</b>	
	<b>DETAIL No. SD-25-4</b>	